

Laser machine

QUARTZ GEODE

By Emric Verwaerde for EPIC



CONTENT

- ◆ LASEA and Laser Cheval overview
- ◆ Range of products
- ◆ New Quartz Geode presentation



01

LASEA and
Laser Cheval overview



LOCATIONS



■ Countries where we have installed machines

 CohPros
China / Taiwan

 BEAMS
Tokyo

 Trokut
India

Raymax
Sydney 

LAS Photonics 

LASEA Belgium
Liège
(Headquarters)



OPTEC
Mons



LASEA France
Bordeaux



LASER
CHEVAL
France
Besançon



LASEA
Switzerland
Biel

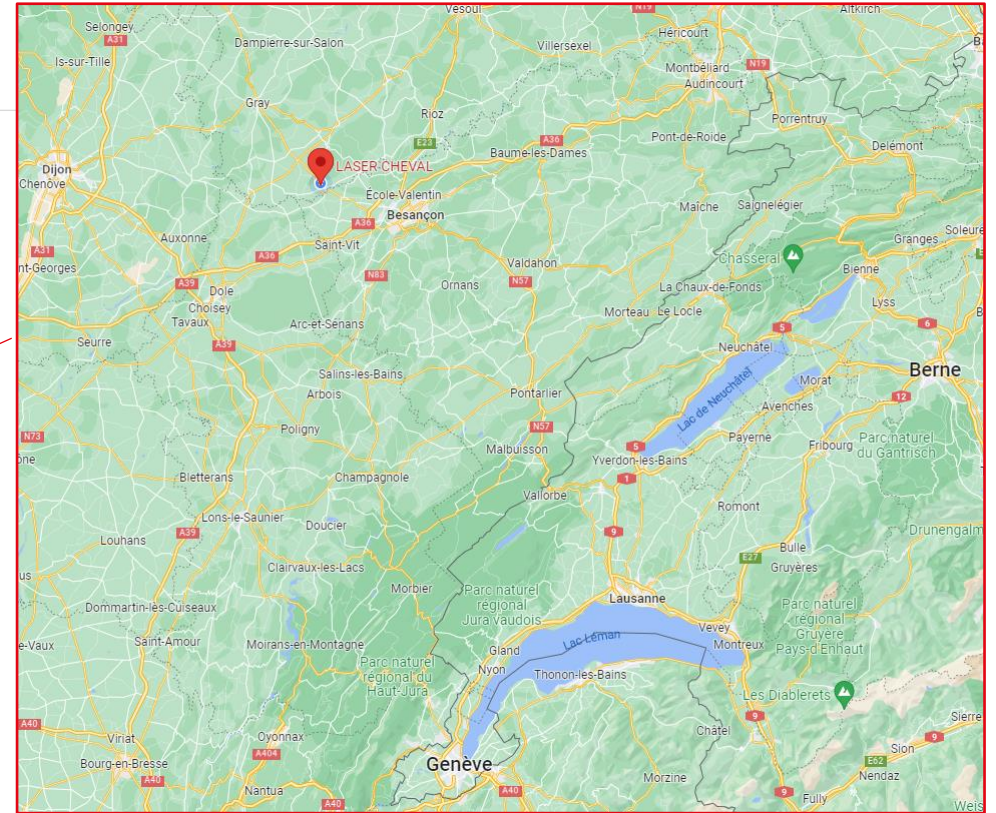
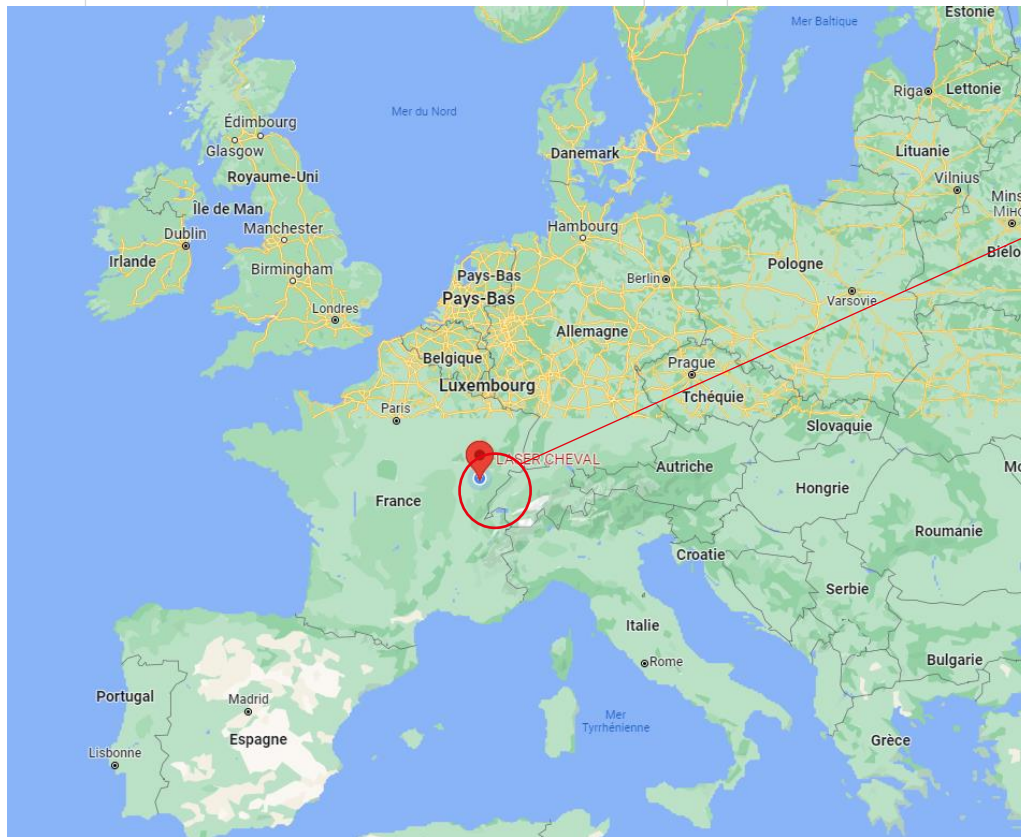


LASEA USA
Optec LLC
San Diego



SITUATION

6 Chemin des Plantes
70150 MARNAY
FRANCE





02

Range of products

LASEA GROUP



PRODUCTS

A range of machines based on 4 different structures



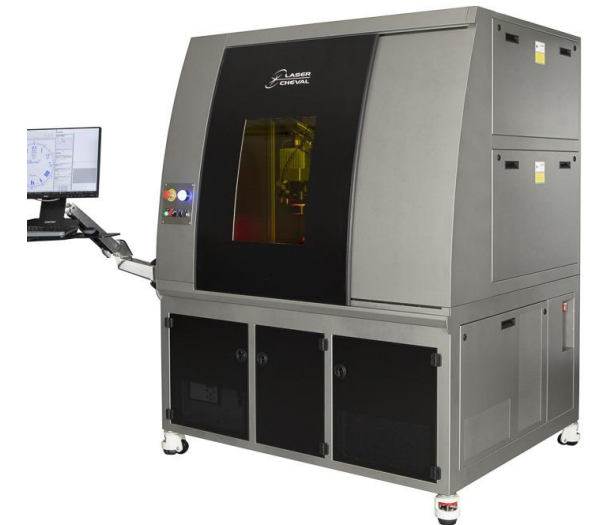
LEM2
L.535 W.900 H.840



QUARTZ
L.800 W.1080 H.2010



SAPHIR
L.1410 W.1085 H.2045



IOLITE
L.1610 W.1385 H.2065

PRODUCTS

IR laser sources from continuous to femtosecond

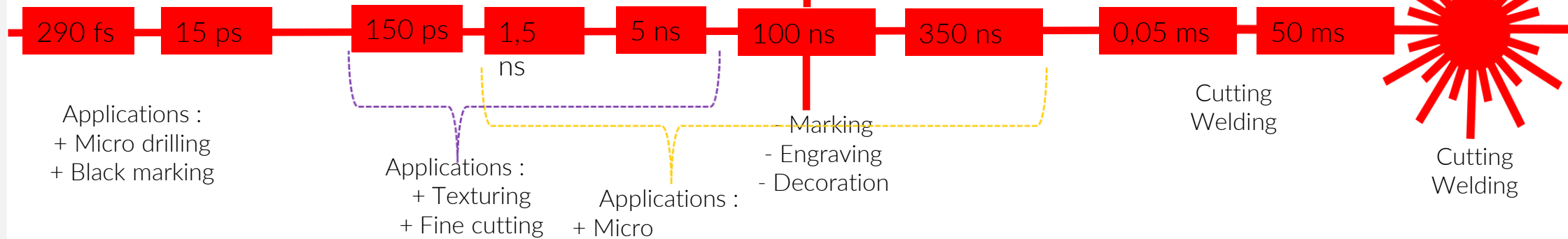
6 / 10 / 15 / 20 W / 50W
1 KHz < F < 1000 KHz

10 / 50 W
2 KHz < F < 1000 KHz

20 / 30 W
2 KHz < F < 1000 KHz

20 / 30 / 50 W
20 KHz < F < 200 KHz

150 / 300 / 450 / 600 W
0 < F < 50 KHz





03

QUARTZ GEODE

WHY THIS NEW MACHINE ?

TECHNICAL ISSUES

Smaller

Precision

Quality

Performance

Productivity

...



WHY THIS NEW MACHINE ?

ESG ISSUES

Raw materials

Consumable

Energy

Waste

Greenhouse gas

...



TECHNICAL SOLUTIONS

Laser source from CW to femtoseconde

Up to 5 mechanical axis

Up to 3 optical axis

A wide range of focal lens

Up to 3 caméras and 3 types of lighting



A stacker of 48 pallets

4 stacks of pallets

3 heights of pallets

Backlight compatible pallets

Uo to 2m² production VS 1,5 m² foot print

All driven par our software

TECHNICAL SOLUTIONS

Laser source from CW to femtoseconde

Up to 5 mechanical axis

Up to 3 optical axis

A wide range of focal lens

Up to 3 caméras and 3 types of lighting



A stacker of 48 pallets

4 stacks of pallets

3 heights of pallets

Backlight compatible pallets

Uo to 2m² production VS 1,5 m² foot print

Modular and scalable

TECHNICAL SOLUTIONS

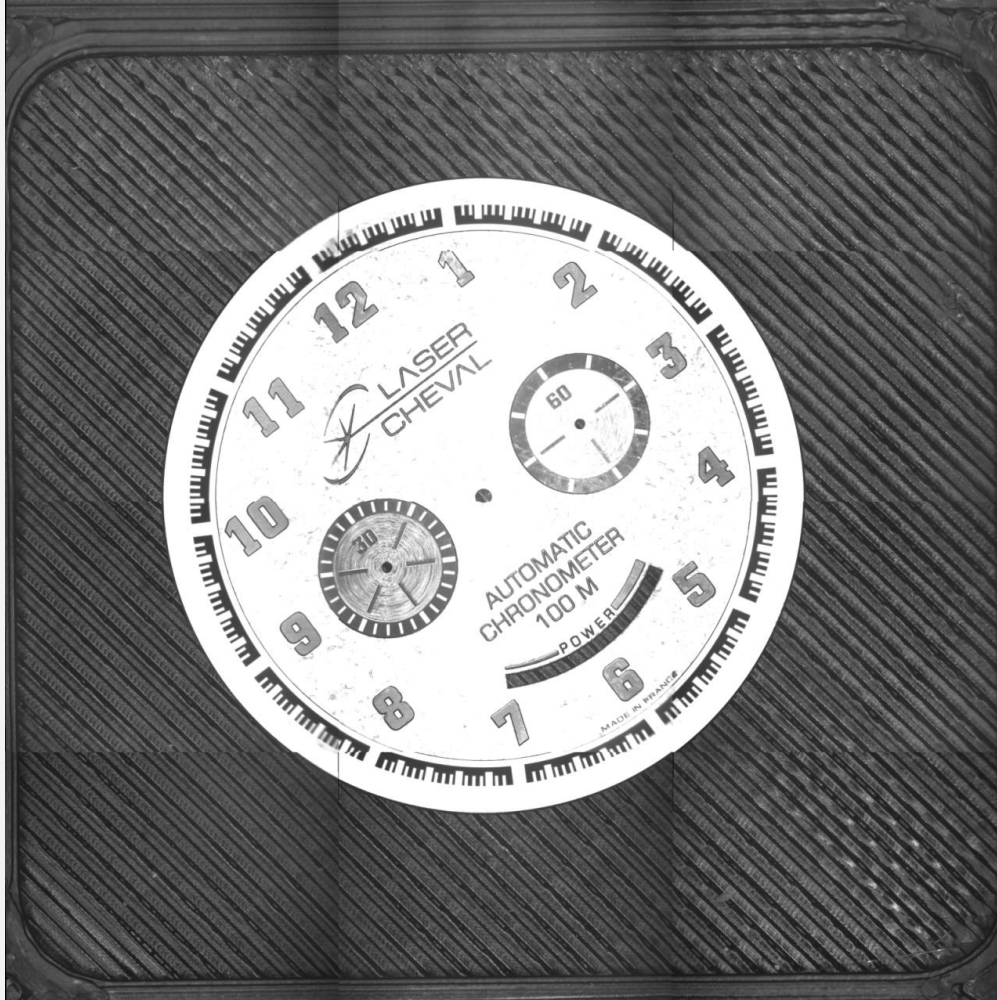


Picture 22x14mm with f.50mm : precision 20 μ m



Picture 7x4m,5m with f.150mm : precision 10 μ m

TECHNICAL SOLUTIONS

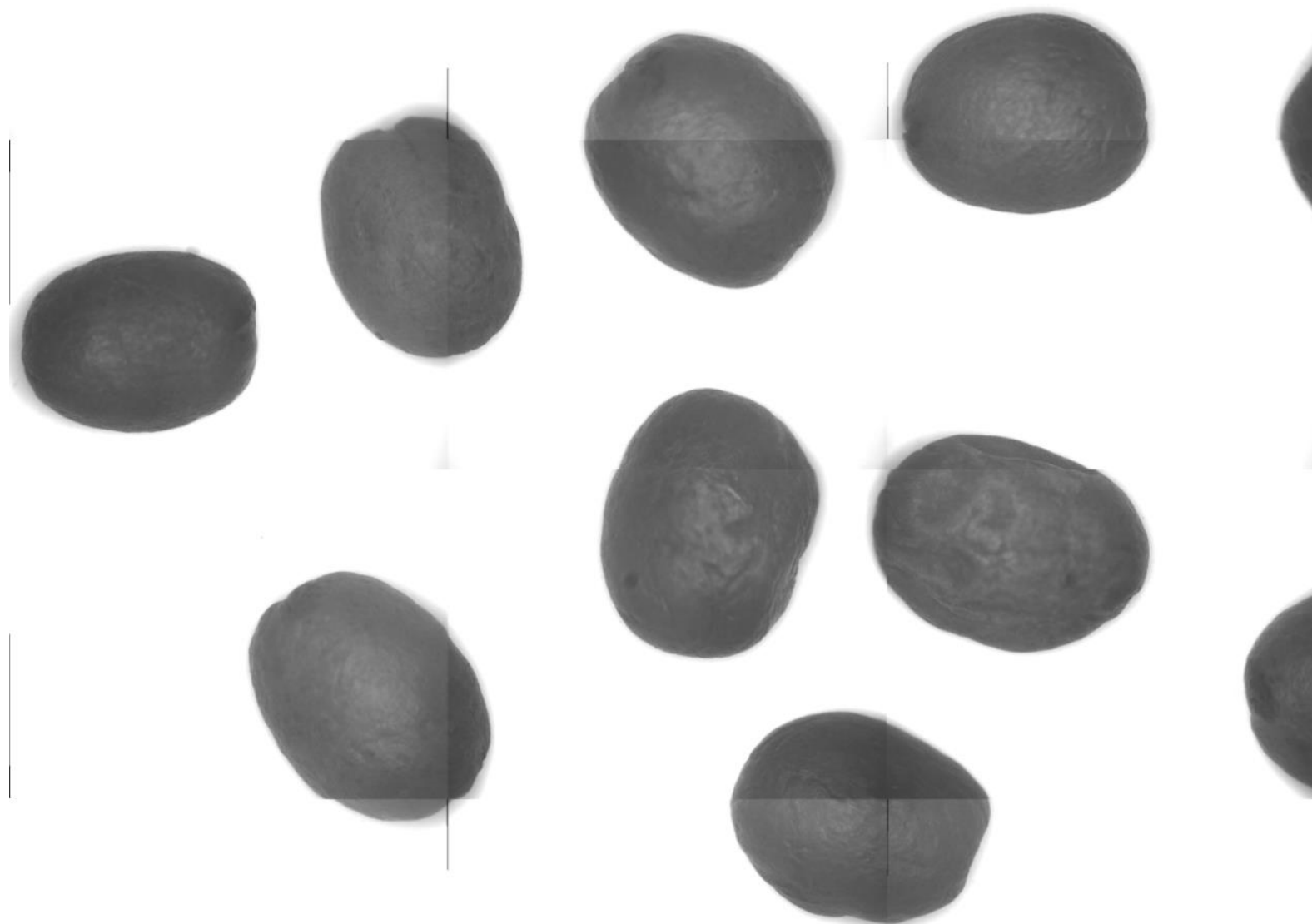


Stitched picture: précision 100µm



Picture 7x4m,5m with f.150mm : precision 10µm

TECHNICAL SOLUTIONS



Picture 70x50mm indisordered parts

Thank you for your attention



Emric VERWAERDE

CEO

Laser Cheval

6 Chemin des Plantes

70190 MARNAY

www.lasercheval.fr