

Bringing light into your customized, complex or extreme environment is our challenge!

EPIC Online Technology Meeting on Specialty Optical Fibers

Assemblies on special optical fibers

Hervé AUBÉ
Product Line Director

Claire GUYONNET
Sales & Marketing Director



Our wonderful team!



70+
years of
expertise



200+
faithful
customers



+10 %
annual
growth



35 %
export sales



2200 m²
facilities



4
clean rooms

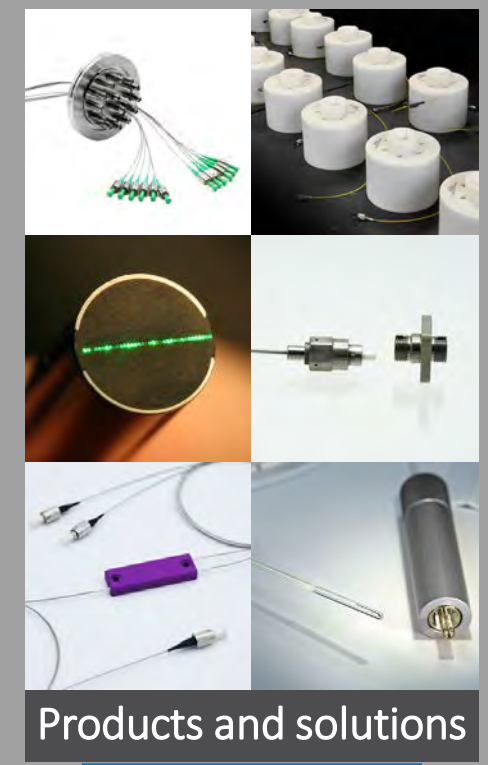
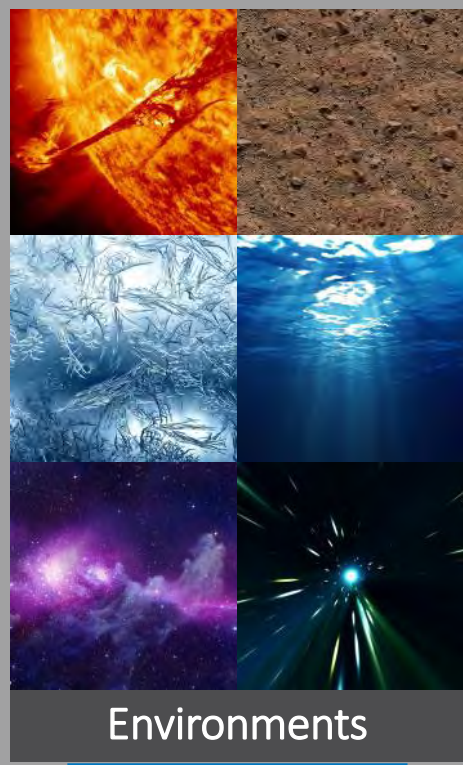


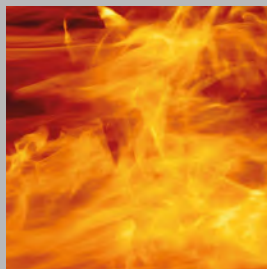
60
employees



8
R&D
eng. + tech.

Bringing light into your customized, complex or extreme environment is our challenge!





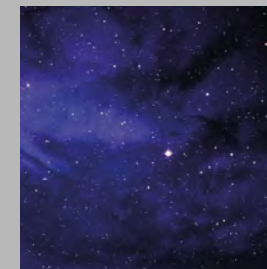
High temperatures
up to 1 000 °C



Cryogeny
down to mK



Extreme pressures
up to 5 000 bar



Vacuum / UHV
down to 10^{-11} mbar



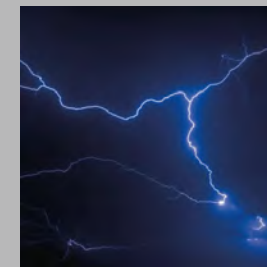
Chemical tolerance
acids, solvents,
aggressive chemicals



Rays and radiation
up to 1 GGy and UV
solarization



Vibrations and shocks
insensitive



High voltages
up to 1 kv/cm



12-13 June 2024. Lannion, France

EPIC Meeting on Specialty Optical Fibers:
New Designs and Novel Applications
at Photonics Bretagne



Various types

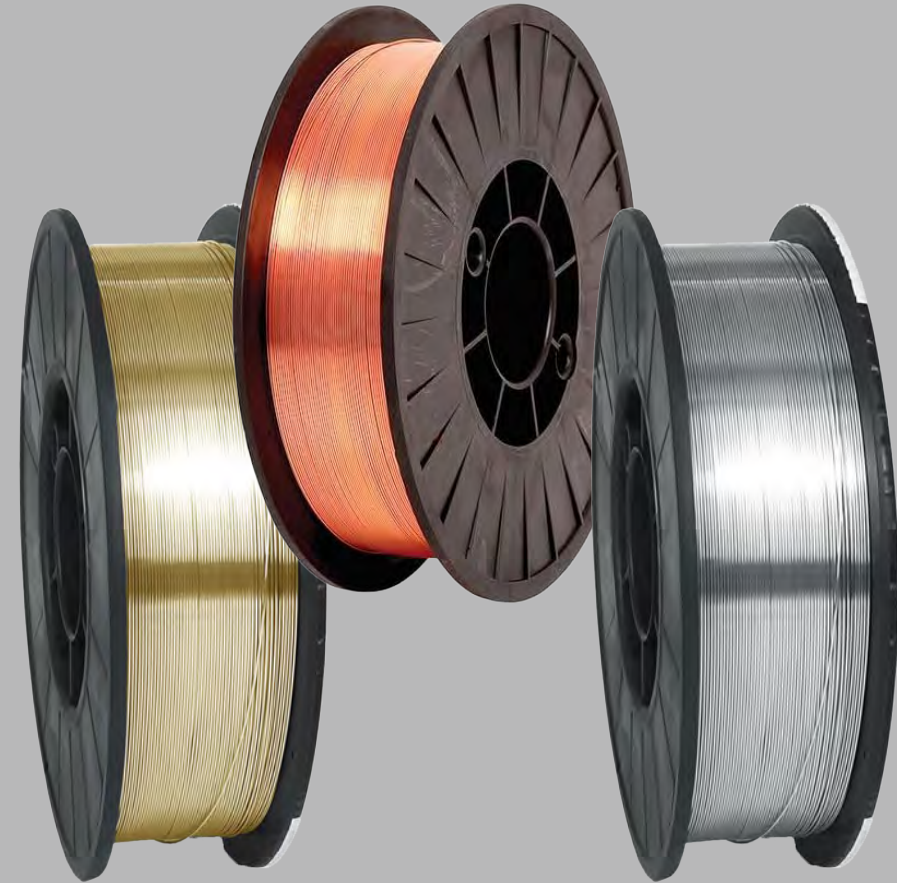
- **Singlemode:** low wavelength, polarization maintaining
- **Multimode:** graded-index, step-index
- **Areas of use:** UV-VIS-IR (from 190 nm to 14 μm)
- **Fiber core typology:** round, square, rectangular, octagonal
- **Extreme environments:** solarization resistant, rad-hard, biocompatibility, high-temperature (up to +1000 $^{\circ}\text{C}$), low temperature (few mK), high pressure (up to 5000 bars)



Over 100 references in stock at SEDI-ATI

- Silica/silica (low-OH, high-OH, solarisation resistant, rad-hard, broad spectrum)
- Silica/polymer (HCS hard-clad silica)
- Sapphire
- Plastic (standard and scintillating)
- Fluoride glass (fluorozirconate, fluoroaluminate, ...)
- Chalcogenide glass (CIR)
- Silver halide (PIR)
- Hollow core fiber

- Acrylate
- High-temperature acrylate
- Polyimide
- Copper
- Aluminum
- Gold
- Tefzel
- Nylon...





To fit a connector or mechanical end



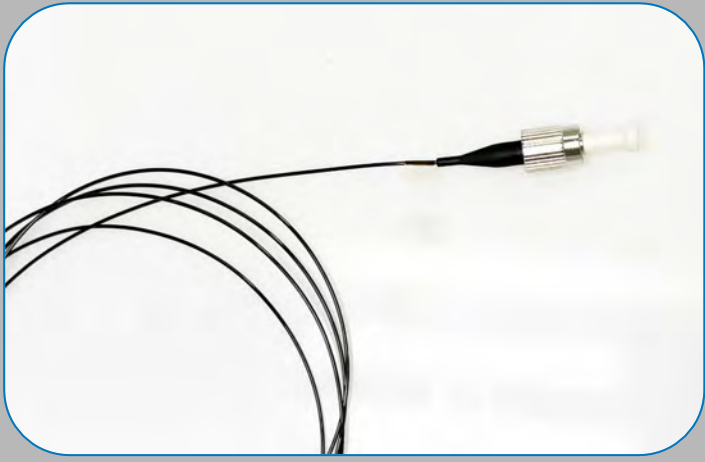
Seal the fiber (feedthrough)



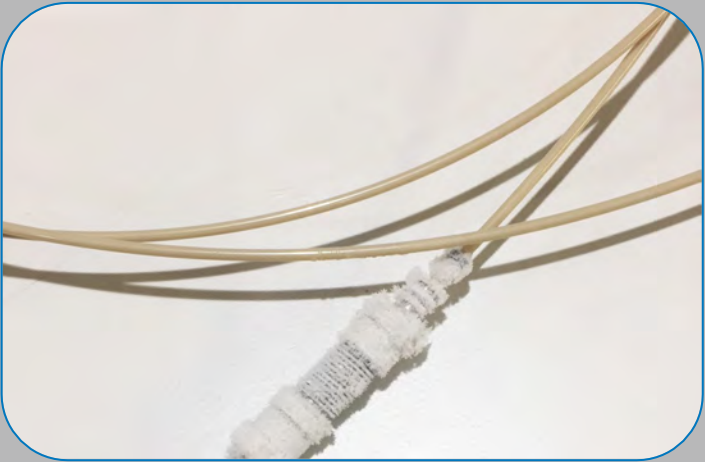
Stainless-steel



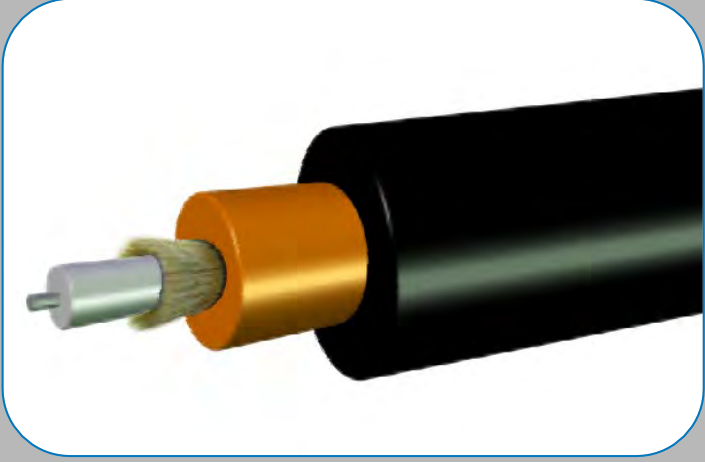
LTCX 1.8 mm



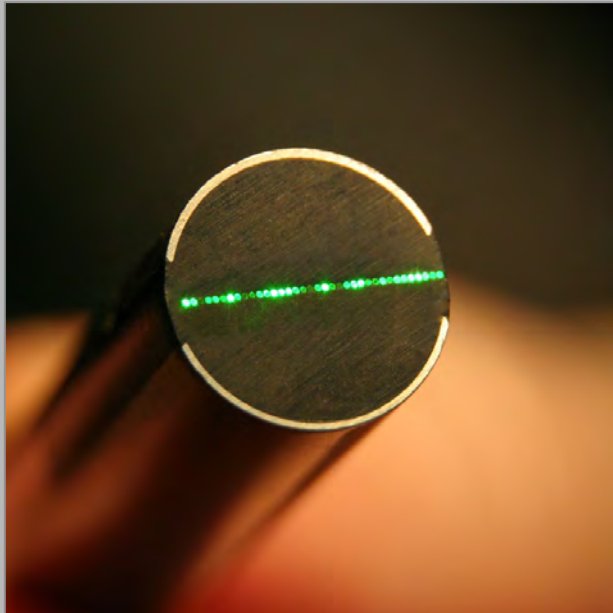
Hytrell



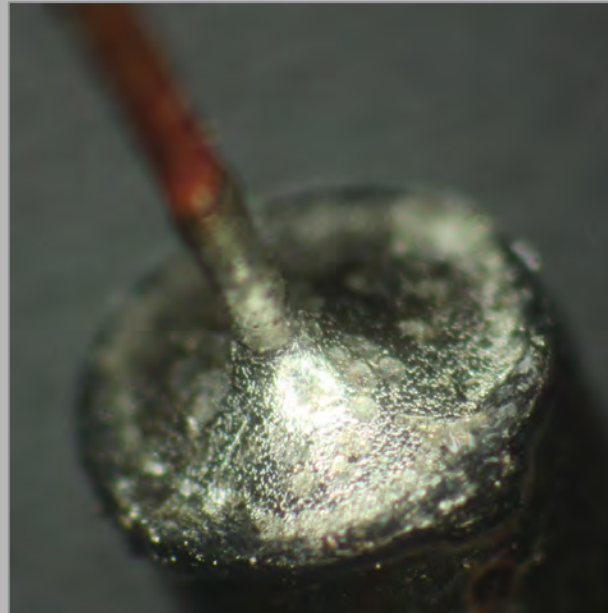
Peek



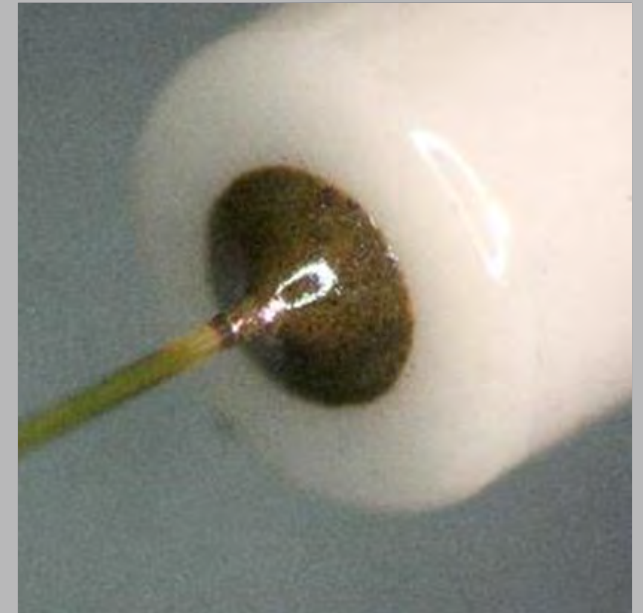
Simplex 4.5 mm



Epoxy



Brazing



Glass-soldering

What we do

We find the best solutions to package specialty optical fibers dedicated to complex applications with strong environmental constraints.

What we could do

Develop custom assemblies that handle extreme environments in hazardous applications.

Challenges

Our challenges are yours!

Brainstorm

Our R&D engineers are available to discuss your very special needs.

SEDI.ATI

8 rue Jean Mermoz


ZA Saint-Guénault

91080 Evry-Courcouronnes

France

 +33 1 69 36 64 32

 contact@sedi-ati.com

 sedi-ati.com

 [LinkedIn](#)

 [YouTube](#)

Scan me

