

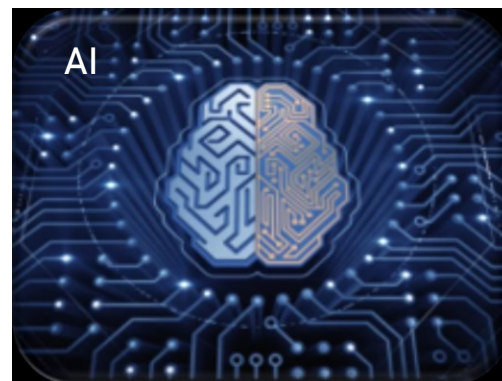
## CORPORATE INTRODUCTION

---

EPIC CANADA TOUR  
06/14/2023

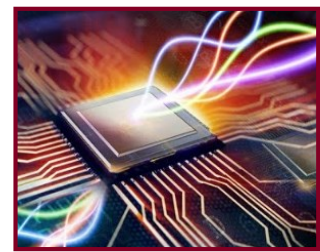


Our WHY  
We enhance the  
Human Experience  
by enabling Advanced Technologies



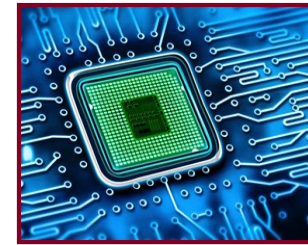
## Photonics

AR/VR and Displays  
VCSELs & Optoelectronics  
 $\mu$ LED



## Wireless & Connectivity

5G, RF Filters, BAW, SAW, BAR,  
PA, IoT, Mobility

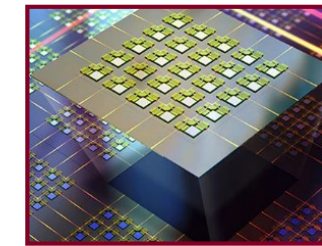
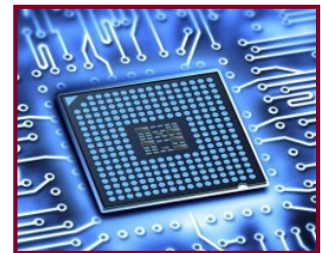


## Power Devices

Power Electronics  
Wide-Bandgap  
Energy & Battery Technology

## Semiconductor & Advanced Packaging

Logic & Memory  
Advanced Packaging  
IDM, Foundry, OSAT



## Sensors & MEMS

Image Sensors, LiDAR,  
Actuators, Life Sciences

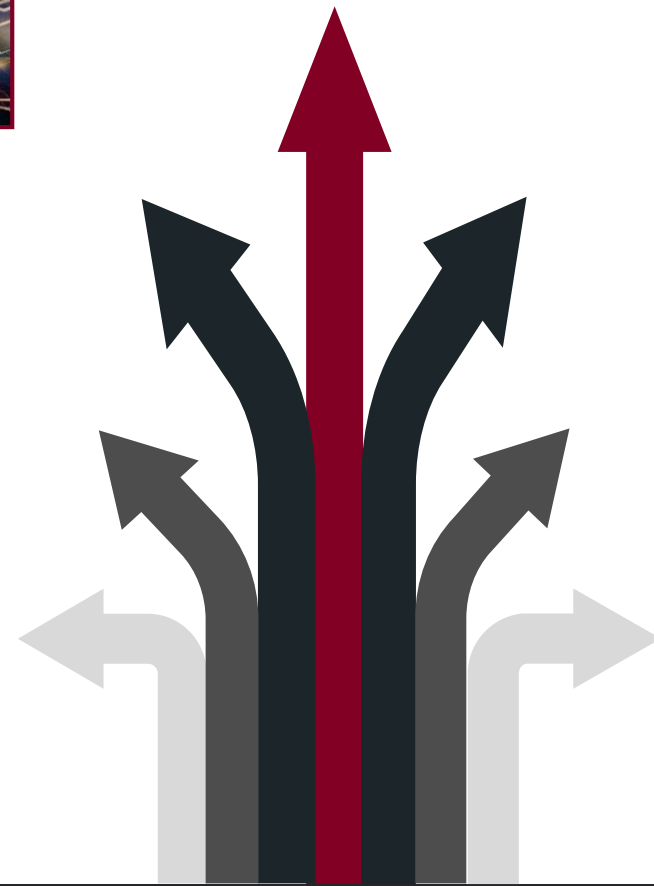
## Memory & Storage

HDD  
MRAM & NVM  
Big Data & Edge



## Scientific & R&D

Universities  
Research Institutions  
Governments



## Etch

ICP – High Density  
RIE – Low Density  
DSE™ – Deep Reactive  
Ion Etch  
IBE – Ion Beam  
HDRF – low damage  
ALE – Atomic Layer

## Deposition

PECVD  
HDPCVD  
PVD  
IBD – Ion Beam Dep  
F.A.S.T. – ALD-like

## Dicing

PDOT – Plasma Dicing on  
Tape  
PDOC – Plasma Dicing  
on Carrier  
PDBG – Plasma Dicing  
Before Grind

## Thermal Processing

RTP – Anneal, Oxidation,  
Activation, Silicide

BRIDGE SOLUTIONS  
LAB-TO-FAB



PRODUCTION SOLUTIONS







History of  
Innovation



Experienced  
Team



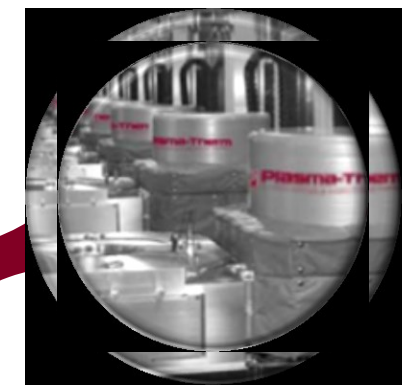
Intellectual  
Property



Partnership



Commitment  
to Service



Large Global  
Install Base

**Innovation – Partnership – Excellence**

How can we help you?

Web: [plasmatherm.com](http://plasmatherm.com)

Email: [sales@plasmatherm.com](mailto:sales@plasmatherm.com)



 **Plasma-Therm**