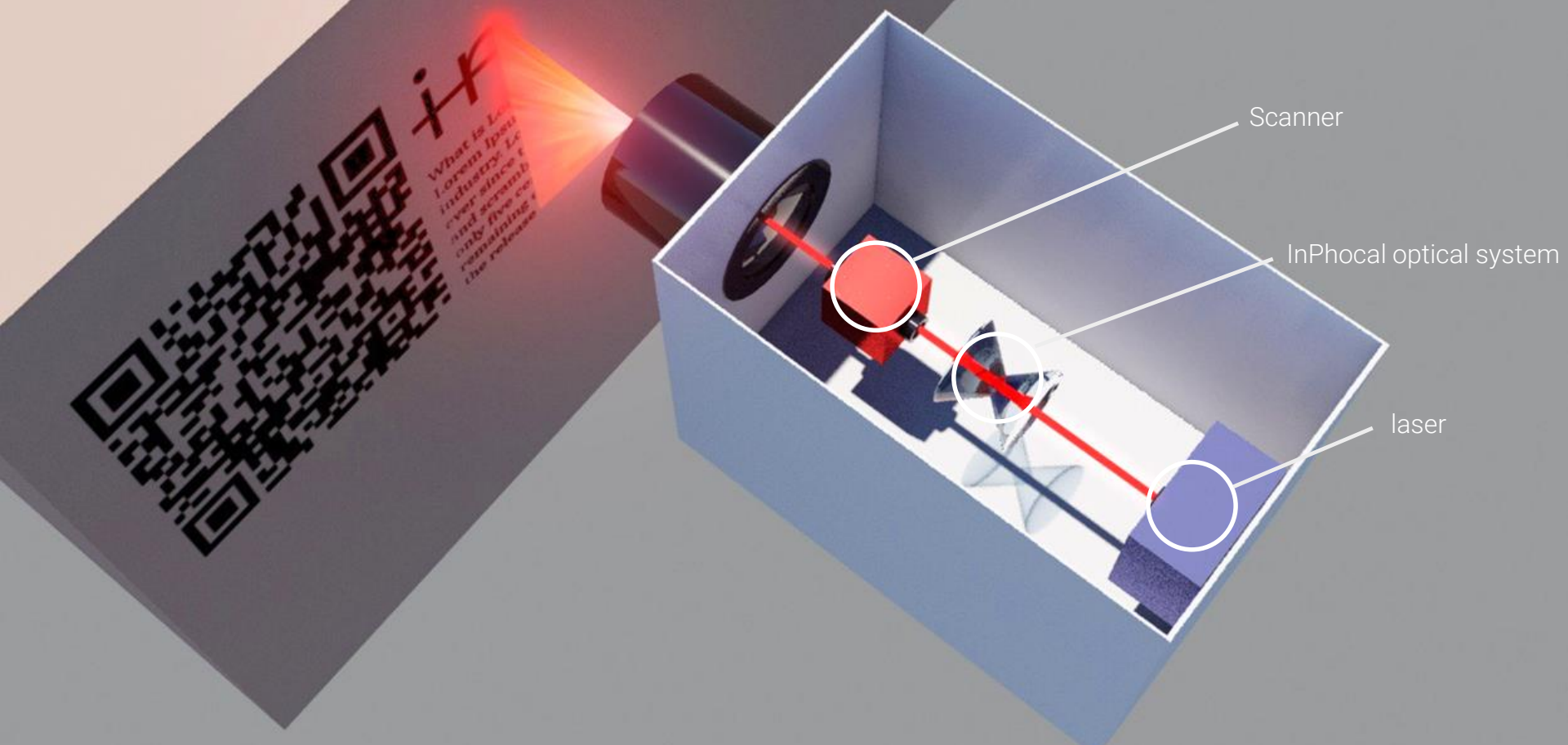


# InPhocal EPIC Pitch

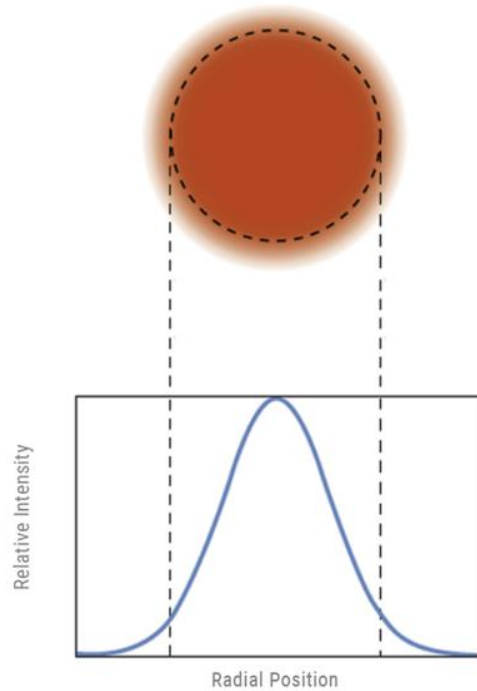
8-4-2022

inPhocal

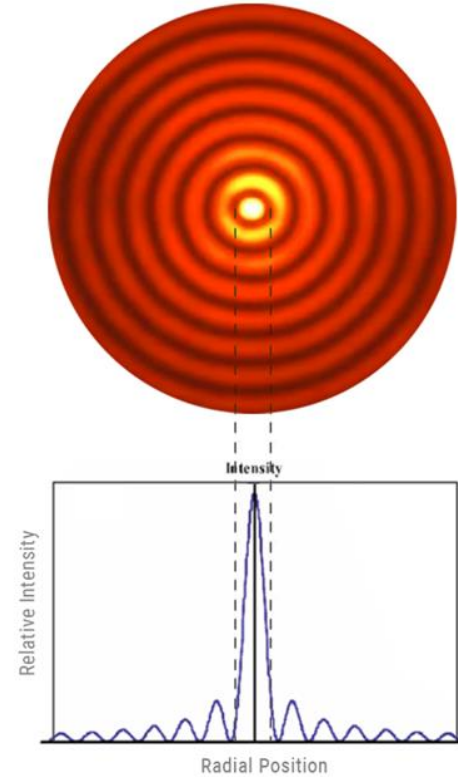




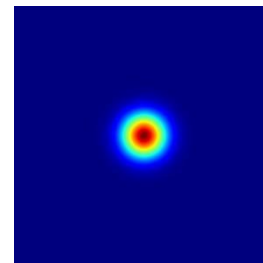
# Normal Laser



# Concentric Laser



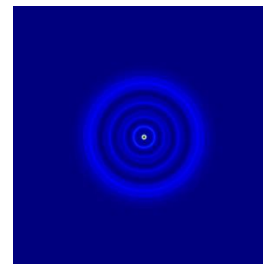
Normal  
laser beam



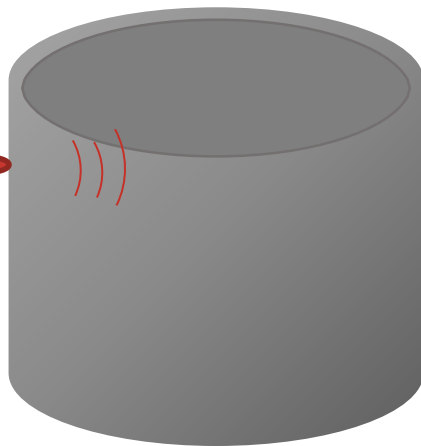
inPhocal  
laser beam



larger focus range



Normal  
laser beam

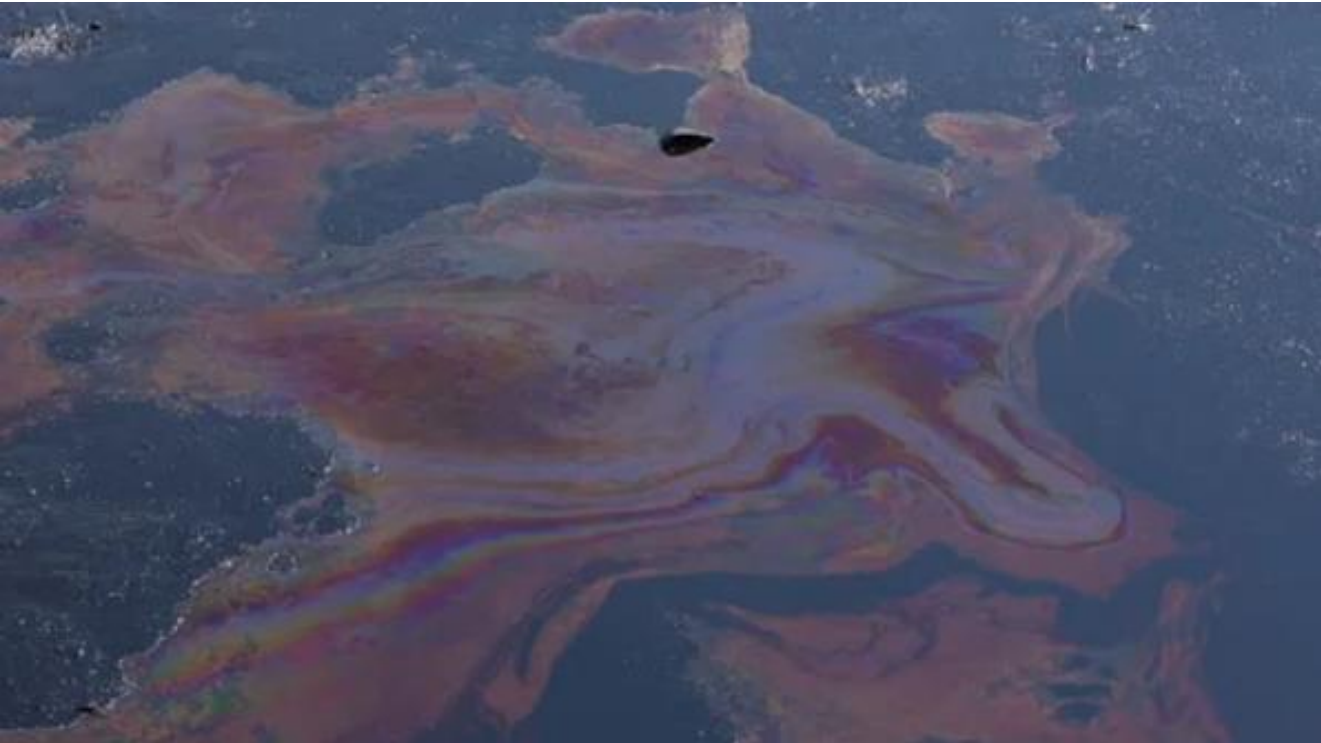


inPhocal  
laser beam



Uneven surfaces  
without  
active focus



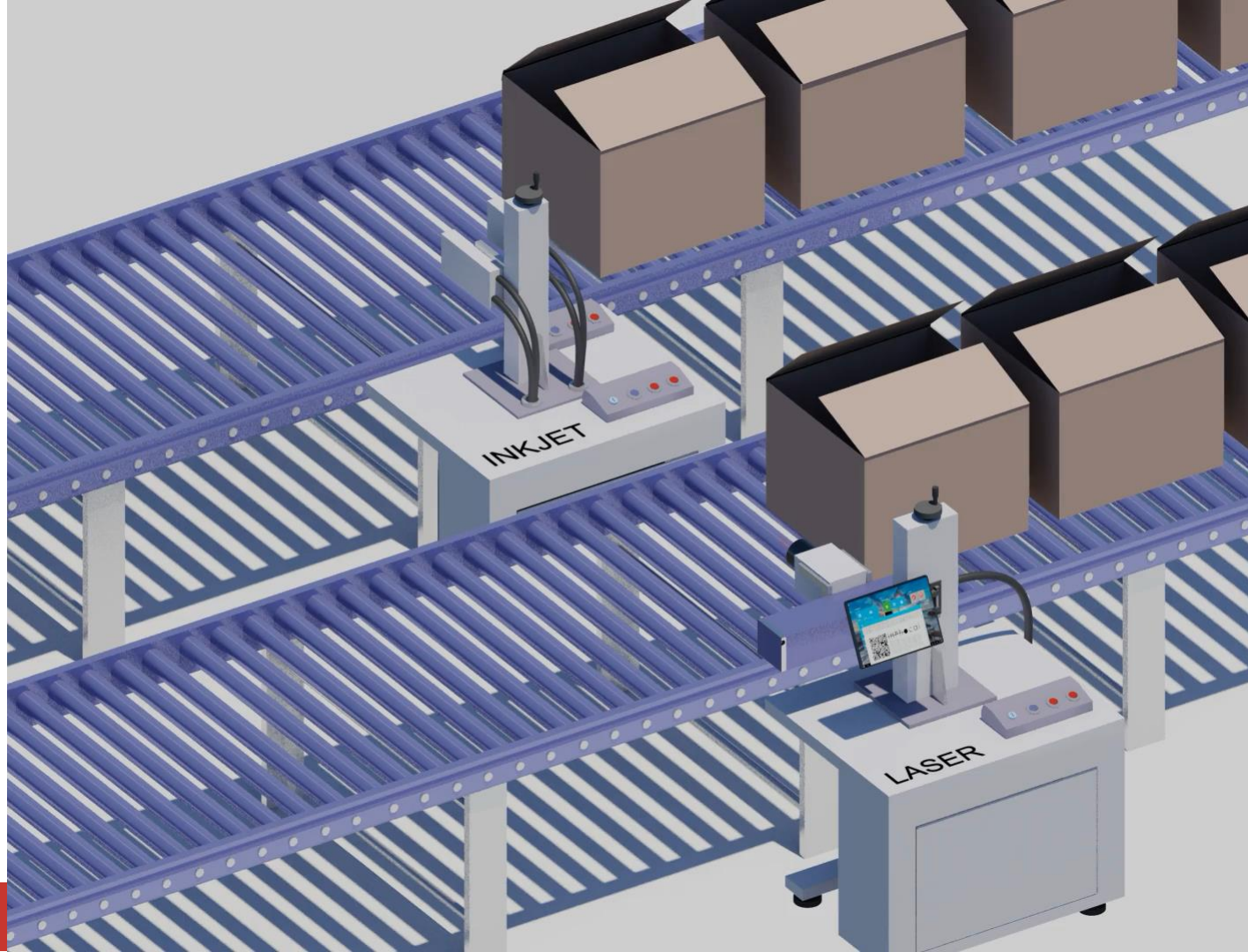


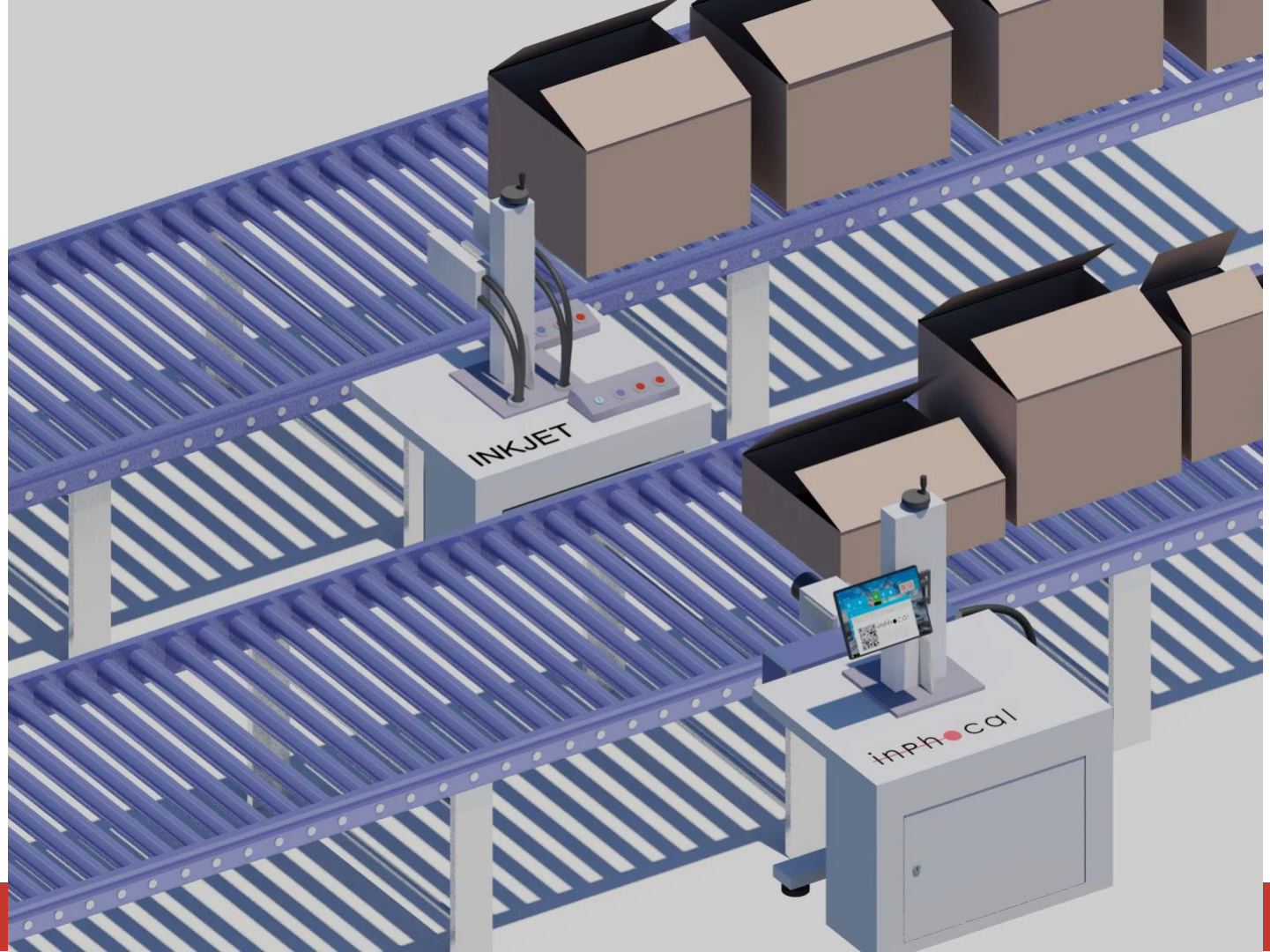
160 Million  
liters of ink  
Each Year

# Market Research









INKJET

inphocal

# Material

Laser type

Fresh Products

CO<sub>2</sub>



# Material

Laser type

Plastics



CO<sub>2</sub>

Fiber laser



# Material

ceramics

Laser type

CO<sub>2</sub>

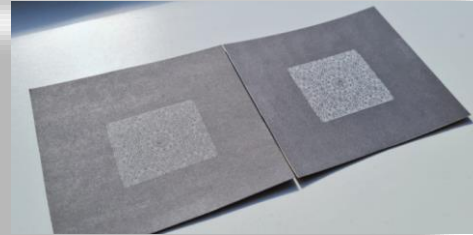


# Material

Laser type

Paper

CO<sub>2</sub>



# Material

Laser type

Metals



Fiber laser



# Material

Laser type

Wood

CO<sub>2</sub>





# Around the world



Preparation for R&D.



Preparation for R&D, Sale prospect



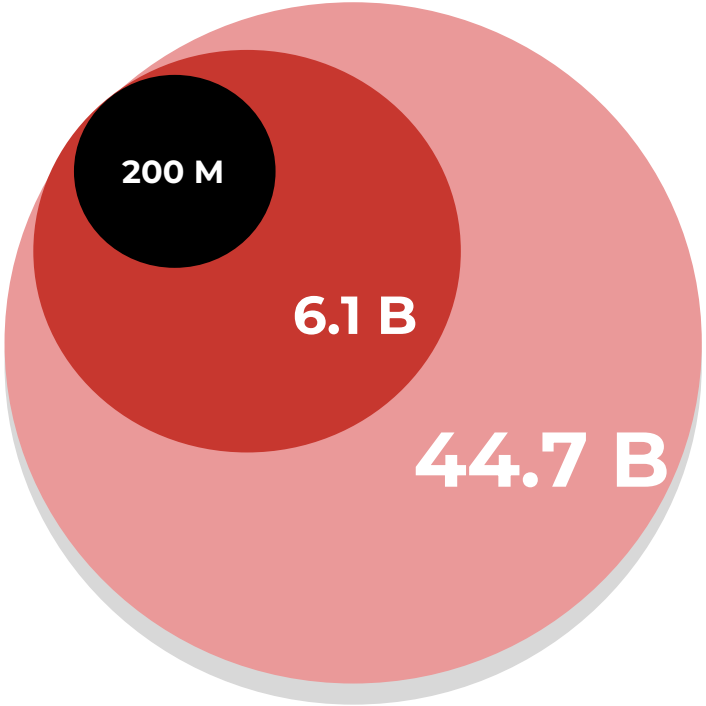
Confirmed R&D, Sale



Our launching customer is Pirahy, a Brazilian company that packs high-quality rice for national and international markets. We performed our second in-line test and first operational test in a fully functional production line. Pirahy executives see the potential of replacing their current systems with inPhocal laser systems, which will increase speed and print surface areas.

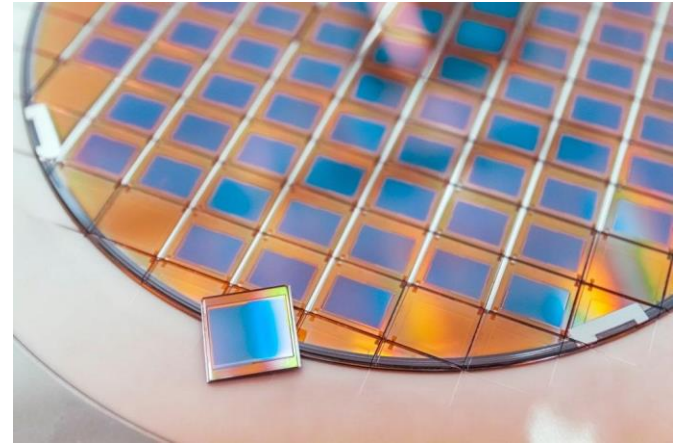
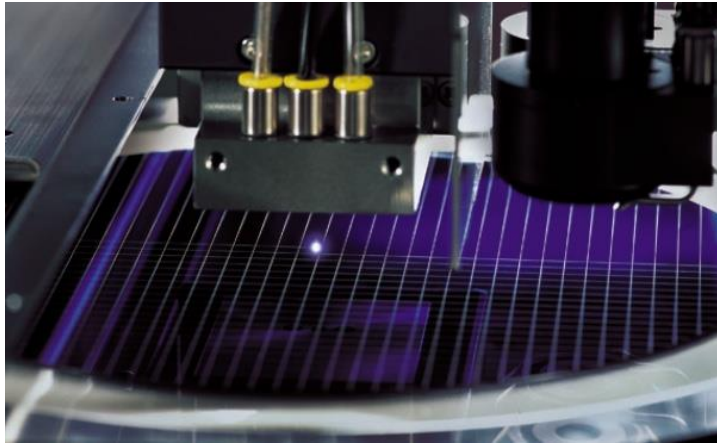


# POTENTIAL MARKET VALUE



# Potential for Wafer Dicing

- Currently collaborating with ASM PT (former ALSI) in the Netherlands, a laser wafer dicer producer
  - R&D study on making cutting process more efficiently
    - Smaller cutting lines
    - 12 inch 1x1 mm chip would mean 5.7 billion more chips produced per year
  - Reduction of 'chipping'
    - Smaller spot means less damage to surrounding chips when cutting, thereby increasing the yield of the cutting
  - R&D project on Advanced Wavefront Engineering with TU Delft
    - Improve optical control system to improve position accuracy



# InPhocal

- Founded in 2019, through the **HighTechXL** venture building program
- Successfully finished **Startlife**
- Official status as CERN spin-off
- agri-food accelerator program and **Globaliser** Agri-food tech program
- Experienced international core team with 15+ years experience in:
  - Optics
  - Sales
  - Finance
  - Startups
  - Industrial design
  - HR



**It's our mission to become the new standard technology in the laser processing industry in 2025**

**THANK YOU!**  
ON BEHALF OF OUR TEAM



**Please contact us if you have any questions:**

CEO: Robert van Tankeren BSc. MSc.  
robert.van.tankeren@inphocal.com  
+31 6 123 07 883  
www.inphocal.com



CFO: Kathy Vredeveldt BSc. MSc. MBA  
kathy.vredeveldt@inphocal.com  
+31 6 2468 6766



CTO: Martijn Boerkamp BSc. PhD.  
martijn.boerkamp@inphocal.com  
+31 6 1669 3775

inPhocal