



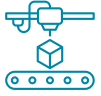
# QS LASERS

Compact MINI DPSS laser

---

# Profile

---



**Manufacturer of compact**, DPSS, lasers for scientific and industrial applications



**Series production**



**Accumulated experience in laser development**, production and service over 35 years. Our aim is to bring cost effective lasers to medical and industrial OEM markets



**Advanced short pulse generation technology**



**Employees** – team of 14 professional persons



**Founded** in April 2018

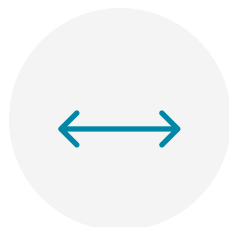


# Field of expertise



We are designing and producing compact, actively or passively Q-switched, SLM, diode-pumped, mini solid-state lasers

01



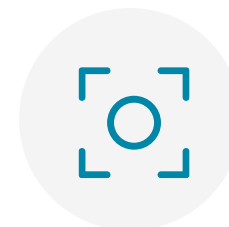
Our pulse length window from 250 ps to 2.5ns (20 -50 ps on the way)

02



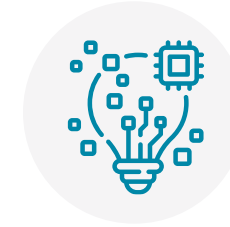
Our pulse energy window from 1uJ to 2 mJ (up to 50 mJ on the way)

03



Our rep. rate window is single shot to 1000 Hz (10kHz, 50kHz and 100kHz on the way)

04



Designing and adopting lasers to OEM design for integrators

05



# About Product

---

# Field of expertise

01

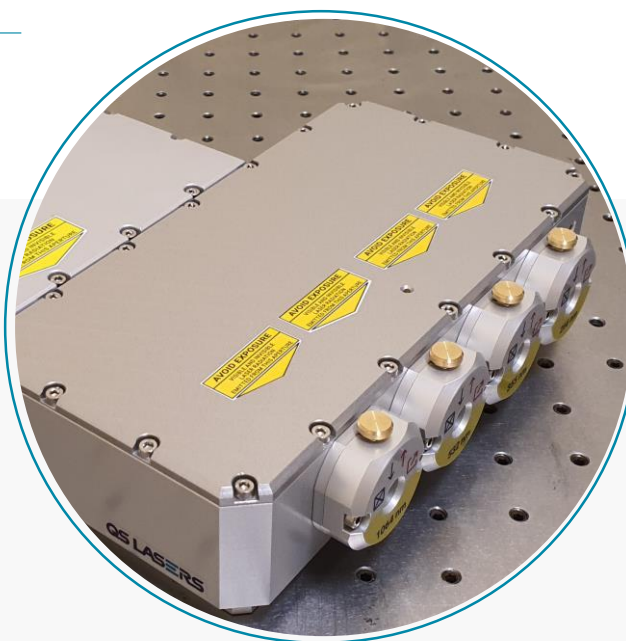
**Diode pumped Nd:YLF, Nd:YAG, Nd:YVO,  
Nd:YAP lasers and laser systems**

02

**Short pulse generation**  
(20-50 ps, 250 -500 ps, < 3ns)

03

**Harmonics generation,  
electro-optical systems**



04

**Custom laser systems**  
for specific applications

05

**Series**  
production

# Product range

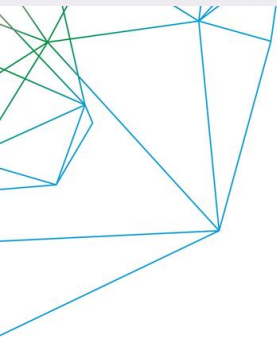
---



**MPL1310/ MPL1510/** - > 1 mJ, 1-100 Hz, 300-500 ps, 1064 nm, 532 nm, 355 nm, 266 nm. Passive Q-Switched.

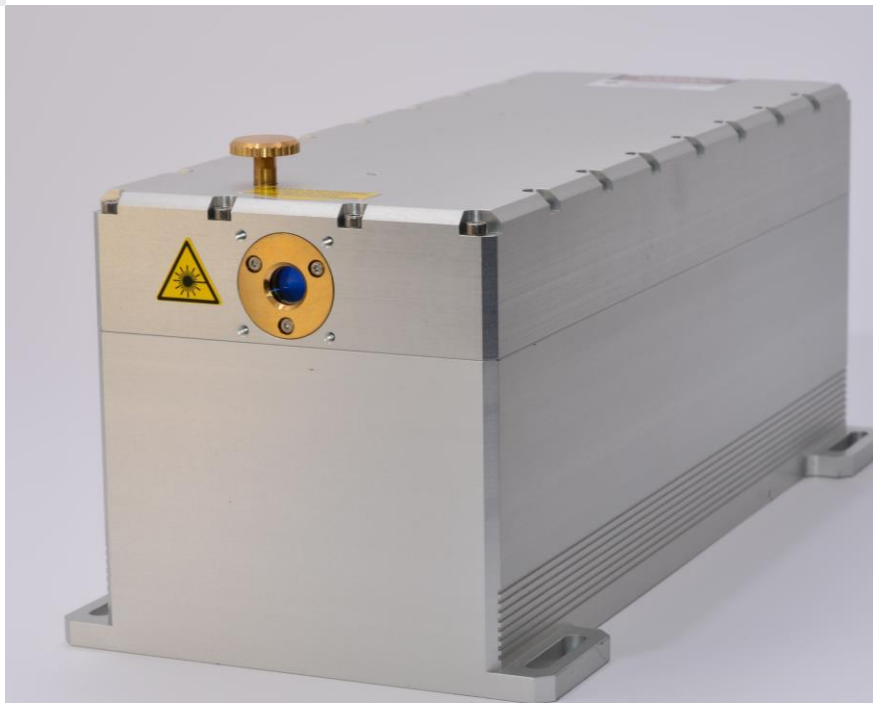
---

**MPL2310/ MPL2510/** - > 2 mJ, 1-100 Hz, 300-500 ps, 1064 nm, 532 nm, 355 nm, 266 nm. Passive Q-Switched.



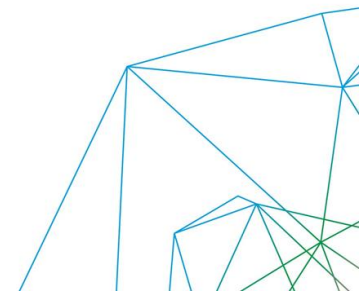
**MPL15100** – 0.5 mJ, 1000 Hz, < 700 ps, 1064 nm, 532 nm, 355 nm, 266 nm. Active Q-Switched

---



**MNL1340** – 0.1 mJ, SS – 1 kHz, < 3 ns, 1342 nm, 671 nm, 447 nm. Passive Q-Switched

---



# New Products coming soon

## The First Mini Lasers in the Market!



Gain-Switched  
**1064 nm**  
 Picosecond  
 Mini Laser  
**ANGIS**

Diode Pumped  
 Sub-Nanosecond  
 Passively or Actively  
 Q-Switched **880 nm**  
 Mini Laser  
**AGRIUS**

## ANGIS

### FEATURES

- > 1  $\mu\text{J}$  pulse energy (>100  $\mu\text{J}$  after the First Amplification Stage)
- > Short pulse duration < **50 ps** (<20 ps available)
- > **No Semiconductor Modulator (SESAM), no Mode Locking**
- > Repetition Rate up to **10 kHz**
- > **Ultra-compact**
- > Passively or Actively Q-switched 880 nm Pump Laser
- > Single 808 nm Pump Source for 880 nm Pump Laser and for 1064 nm Preamplifier
- > **Series Production**

## AGRIUS

### FEATURES

- > True Three Level Nd doped Laser
- > 10  $\mu\text{J}$  pulse energy at **880 nm**
- > Short pulse duration < **1 ns** (Passively QS) and < **0.5 ns** Actively QS)
- > Repetition Rate up to 10 kHz
- > **Ultra-compact**
- > Second Harmonics **440 nm**
- > **Series Production**





**QS LASERS**

# Let's talk!

---

 Savanoriu Ave. 231, LT-02300, Vilnius, Lithuania

 Phone: +370 682 47806

 E-mail: [sales@qslasers.com](mailto:sales@qslasers.com)