

Company Snapshot



Basics

- Mission: Enable machines to see like humans
- Established 2018
- HQ Monrovia, CA
- ~40 people
- >60 patent applications



Technology

- 25+ year heritage in Silicon Photonics
- Proprietary silicon photonics integration platform with 10-100X better performance than competitors
- Coherent Imaging platform with best performance and widest range of data (depth, motion, polarization ...)
- Proven technology and well-established high-volume manufacturing

Investors

EPSON

UMC

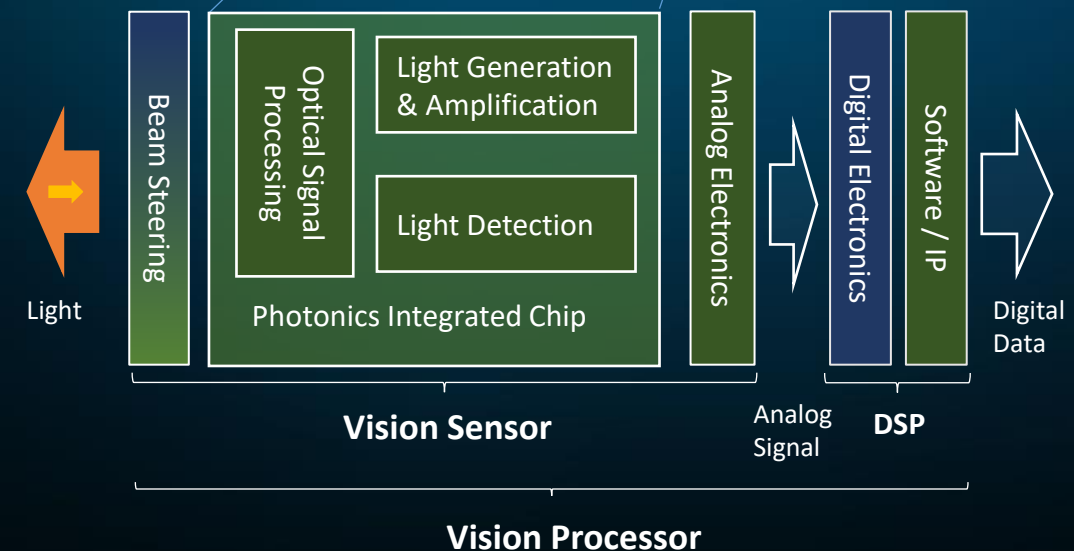
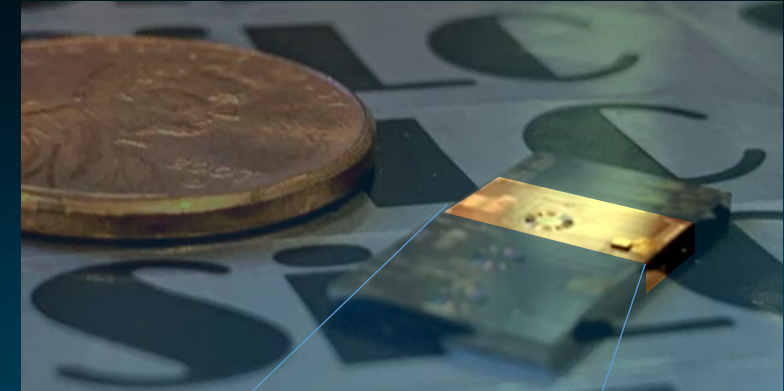
OSRAM



DELL
Technologies
CAPITAL

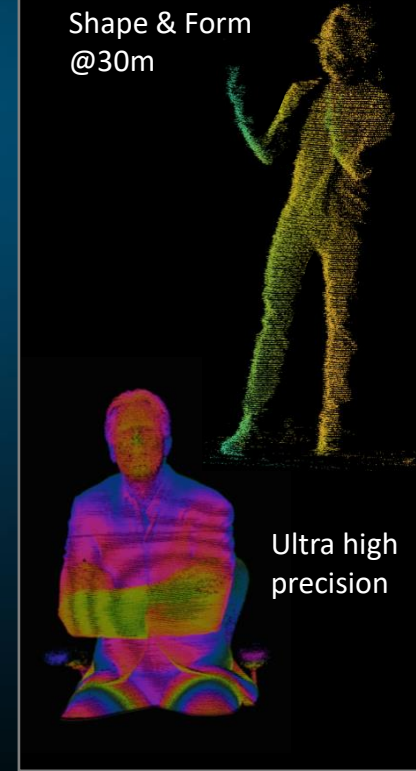
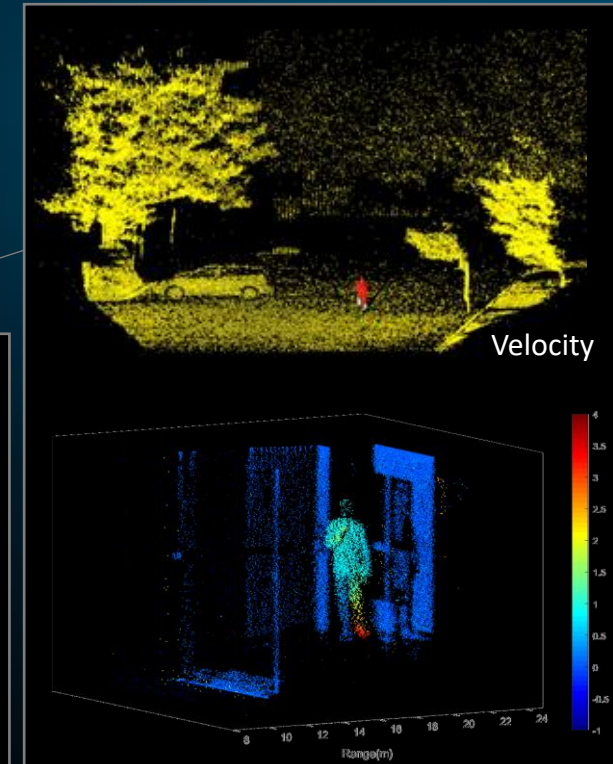
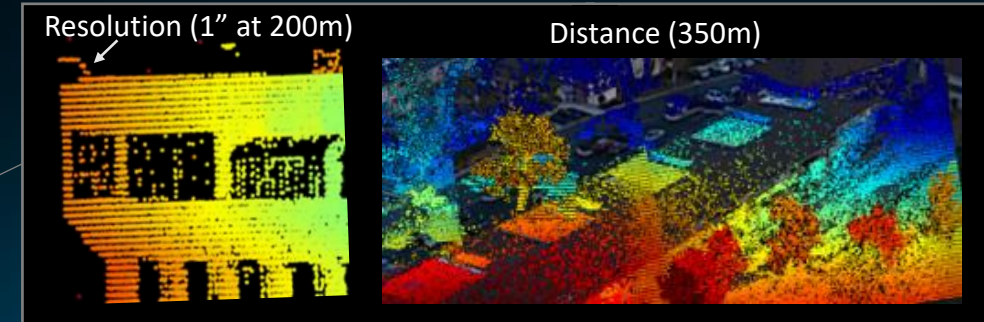
SiLC's Vision Sensors and Processors

- SiLC's Vision Sensors and Processors consist of one or more proprietary FMCW Vision Cores
- These cores integrate all needed photonics (lasers, detectors and passive devices) into a single photonic chip
- Each core processes returning photons one pixel at a time to extract depth, velocity, polarization dependent reflectivity, etc
- Processing speed depends on object distance and precision needed
- More cores per chip (multi-core) enable easy scaling for higher performance

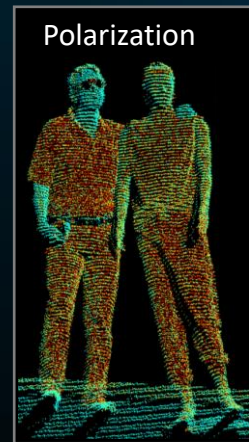


Key Features of SiLC's Smart Vision

- Works in any lighting condition (integrated light source)
- Interference, hack immune and eye safe (1550nm)
- Long range and high resolution enable early identification of objects and analysis of shape and form
- Polarization and wavelength information facilitates material identification and surface analysis
- Precise velocity enables rapid threat detection and analysis of motion (micro-doppler) for object classification
- Color fusion



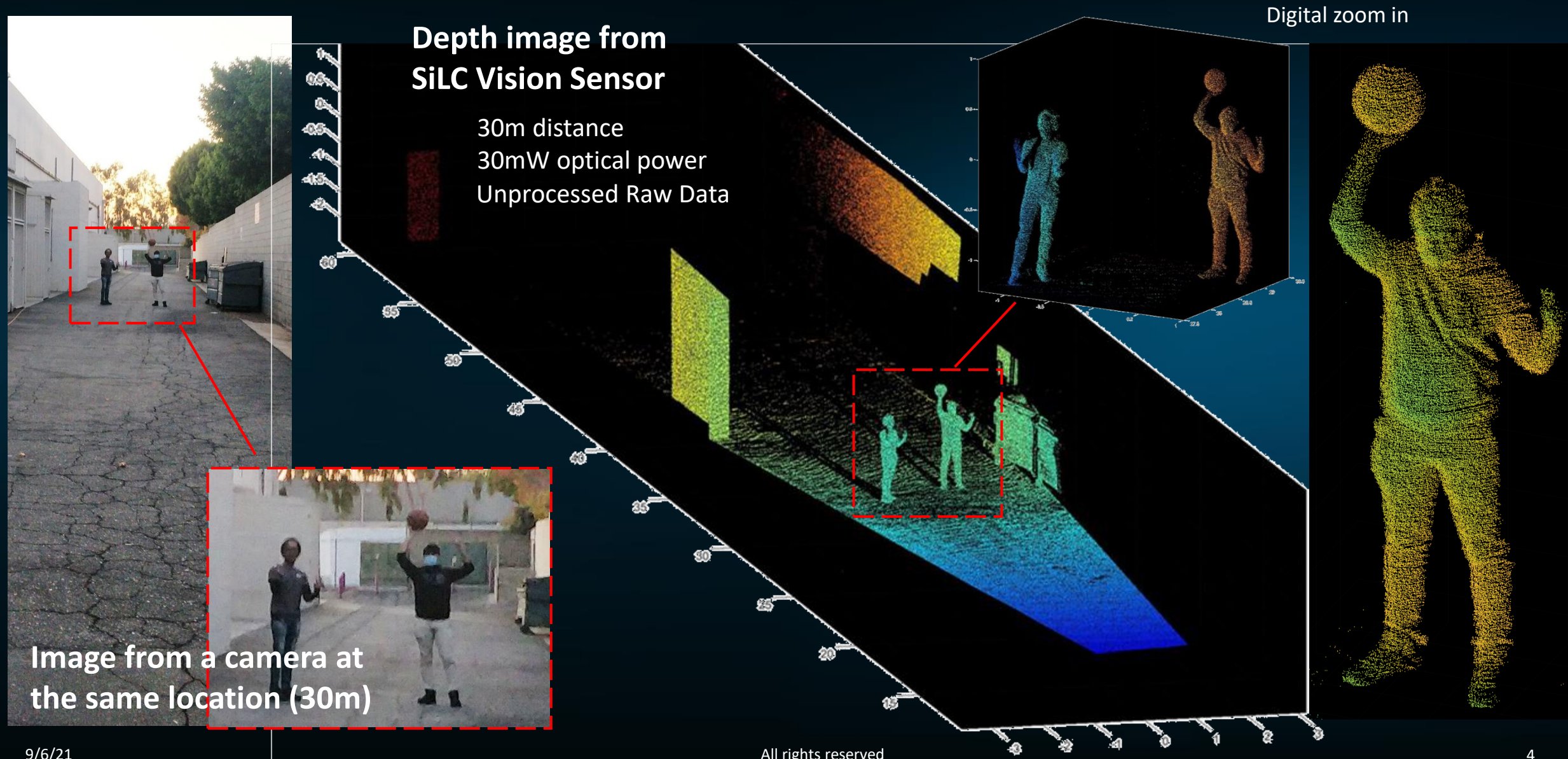
Color fusion



Polarization

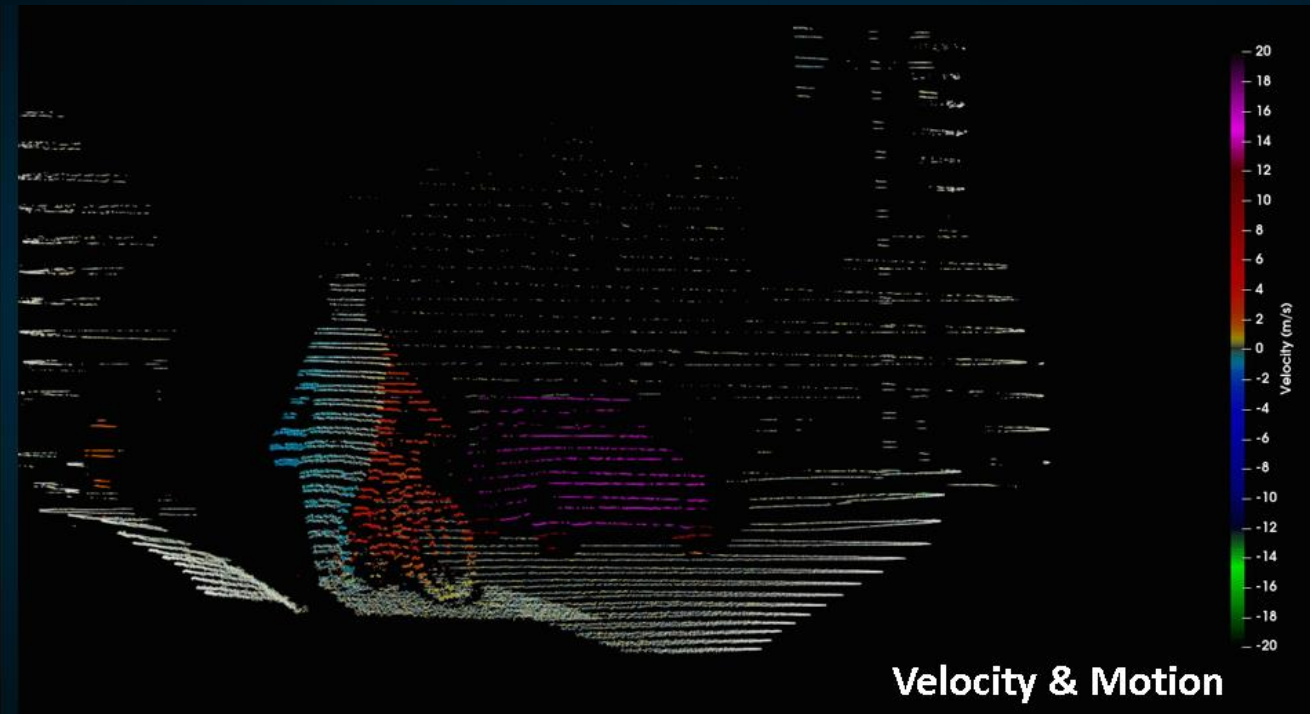
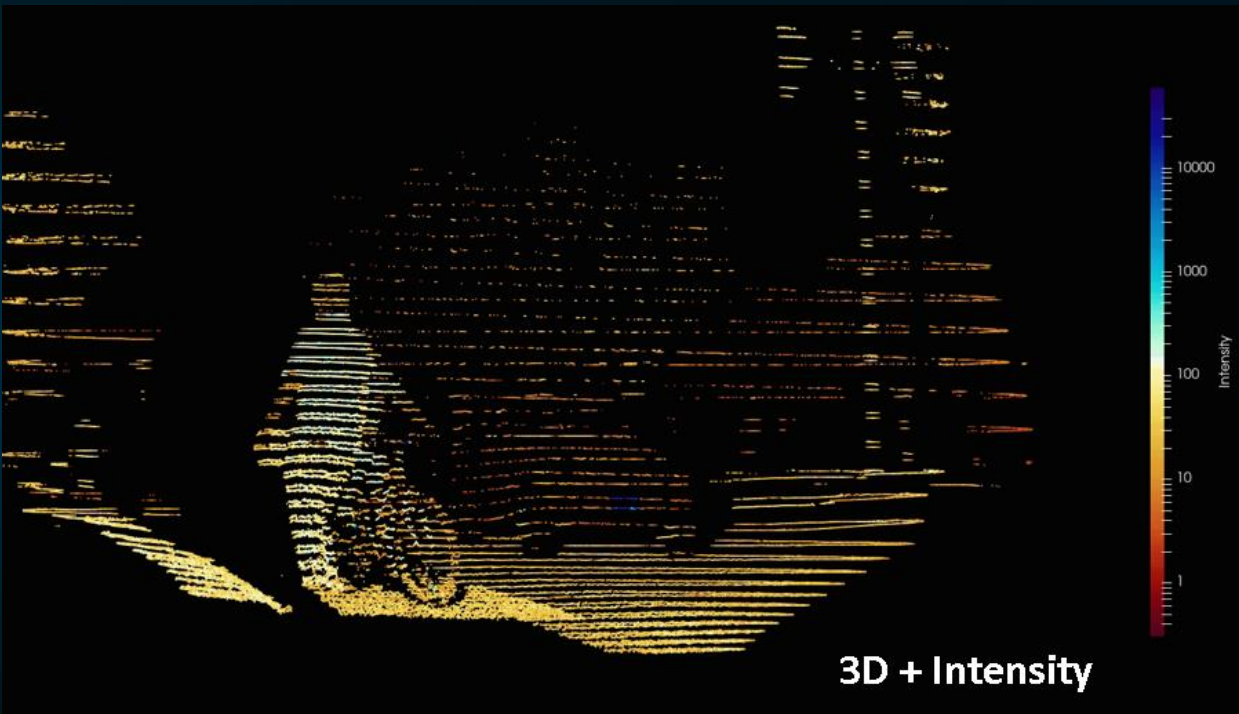
High Resolution Enables Form and Shape Data

SiLC



4D+ Imaging

- Accurate instantaneous velocity helps machines to better understand their environment and react faster



Resolution and Range

- SiLC is the only company that has demonstrated long range with an integrated solution
- Extremely high resolutions are possible with SiLC's technology even at long range



Summary



- SiLC is a supplier of highly integrated silicon based critical components and firmware/software for coherent imaging
- Our mission is to enable market transition to coherent technology across a broad range of applications
- SiLC owns its own proprietary silicon photonics integration platform, which is optimized for coherent imaging
- We are the only player that can integrate all photonics components needed in a single chip
- We are on our 4th generation chip and are working with a broad range of customers across many applications
- Shipping first products to strategic customers this year
- We seek partnerships that complement us or create a better environment for our customers. Examples include:
 - Perception software providers
 - DSP / FPGA / Edge Processor suppliers
 - Scanner solution providers

Selected by EE Times as one of the top silicon startups to watch



Gartner
COOL
VENDOR
2021
Gartner, 'Cool Vendors in Silicon Photonics'



Frost and Sullivan 2020 3D/4D Technology Innovation Award

Customers & Markets

- Large customer pipeline with many active projects across multiple markets
- Announced tier 1 collaboration in 2019
- Concept car with headlight integrated SiLC LiDAR on the road this year
- Going to announce strategic collaboration with industrial automation and robotics in Q3

