



- 📍 Burgbrohl, GERMANY
- ✳ Founded 1979
- 📍 18 locations around the world
- ⚙ Global 24/7 service
- 👤 ~1,200 employees worldwide

OUR MISSION
Ensuring product quality



BEVERAGE

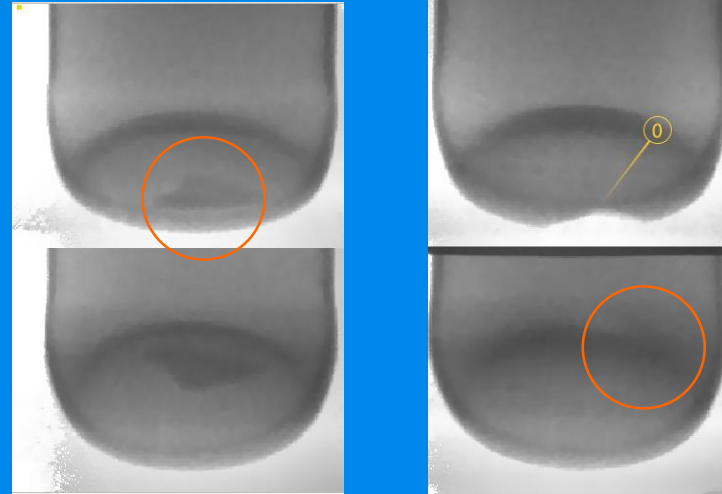
FOOD

PHARMA





double X-ray base inspection

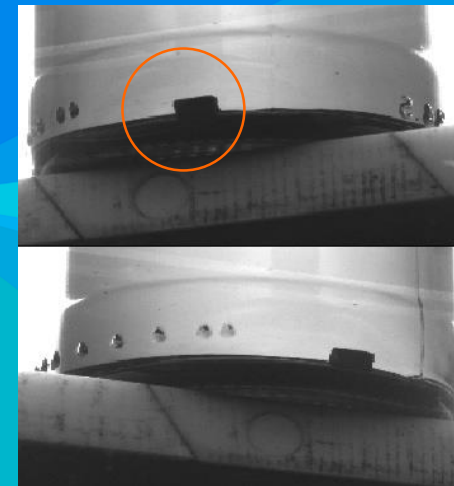


glass splinter in
the container middle

crack

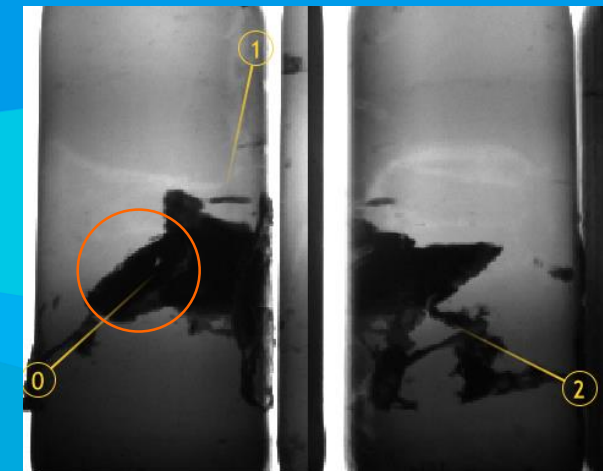


optical base inspection



plastics in the outer base area

optical lateral inspection



contamination in the sidewall area

Classic approach: camera based

(single or multiple cameras)

New technologies might help to achieve additional information about the crate and its content:

- Time-of-Flight-cameras
- structured light
- laser triangulation
- LIDAR
- what else ???

What are the benefits of these technologies and what are the limitations, especially with regard to reflective glass surfaces?



Jörg Nonnen
HEUFT SYSTEMTECHNIK GMBH

EPIC Online Technology Meeting on Photonics
for the Food & Beverage Industry



WE ARE HEUFT!

HEUFT SYSTEMTECHNIK GMBH – heuft.com

Thank you for your attention!

And HEUFT knows how!