

24 March 2021



PHOTONICS FOR FASHION & DESIGN

Application potentials for a Luxury Brand

EPIC Meeting - Sustainable Textiles, Wearables, Fashion and Design

Rafael Michalczuk, Senior Funding & Technology Manager

SWAROVSKI

Mastery of light



*“WE CREATE A MORE SPARKLING WORLD - TURNING LIGHT INTO DELIGHT
SINCE 1895”*

3D Printing @Swarovski

- Design
 - 3D-Print - lost wax model
 - Casting
 - Metal parts
 - Jewelry
 - 3D Glass Printing
 - Post-Processing



Decorative functional foils

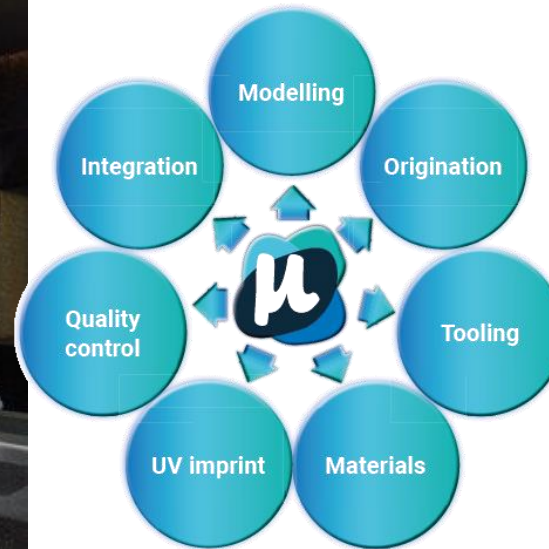
Horizon 2020 PHABULOUS: Free-form micro-optics

Free-form micro-optics for micro-structured foils and panels with gemstone appearance



Active Panel combines the luminous power of 200,000 crystal per square meter with a backlighting of special LEDs.

© Swarovski



<https://phabulous.eu>



Hexagon Panel is an homage to the world-famous honeycomb design that has sparkled on spectacular facades all over the world.

© Swarovski

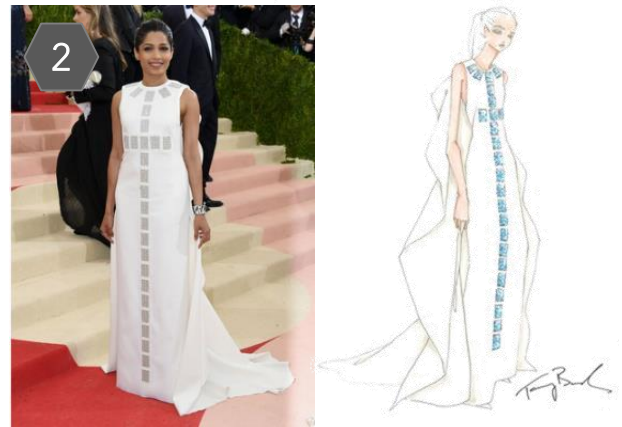
Printed Electronics

4 different application scenarios

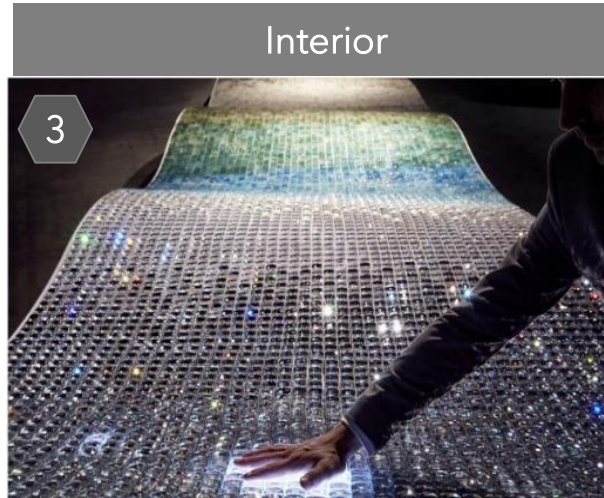


BEWELL

Horizon 2020, 825172



Textile & accessories



Automotive



LEE·BED

Horizon 2020, 814485



LEE·BED

Horizon 2020, 814485



LEE·BED

Horizon 2020, 814485

1 - Swarovski Misfit Shine Activity Tracker (2015) 2 - Color-changing Swarovski crystals on Tory Burch Dress (New York Met Gala 2016)
3 - "Unda" installation by Anjali Srinivasan (Design Miami/Basel 2016) 4 - Mercedes Benz S-Class Coupé headlamps with Swarovski crystals (2014)

Printed Electronics

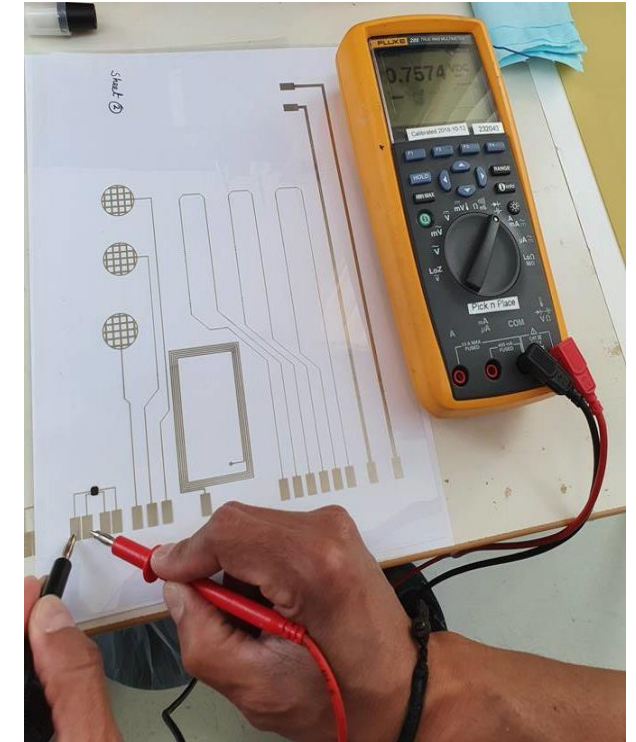
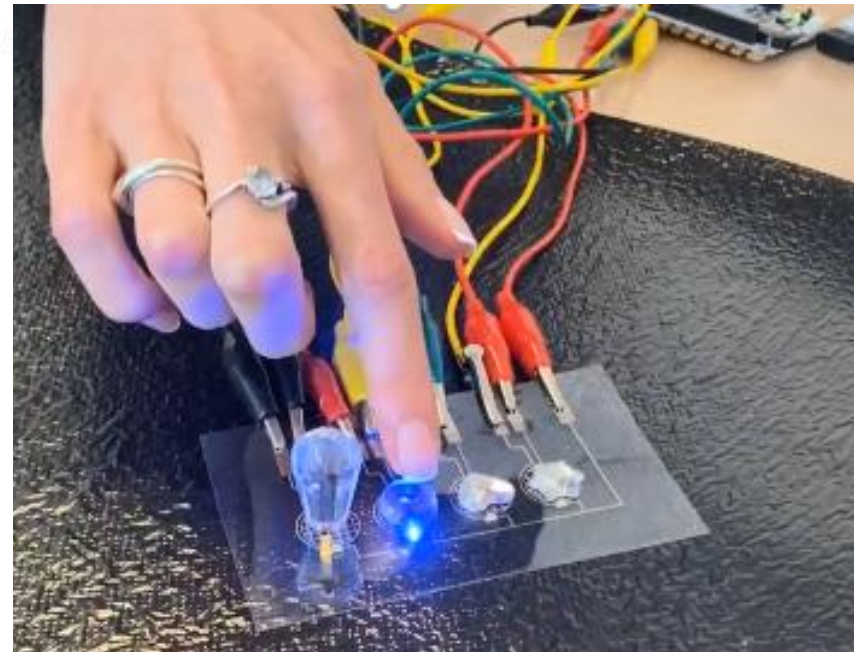
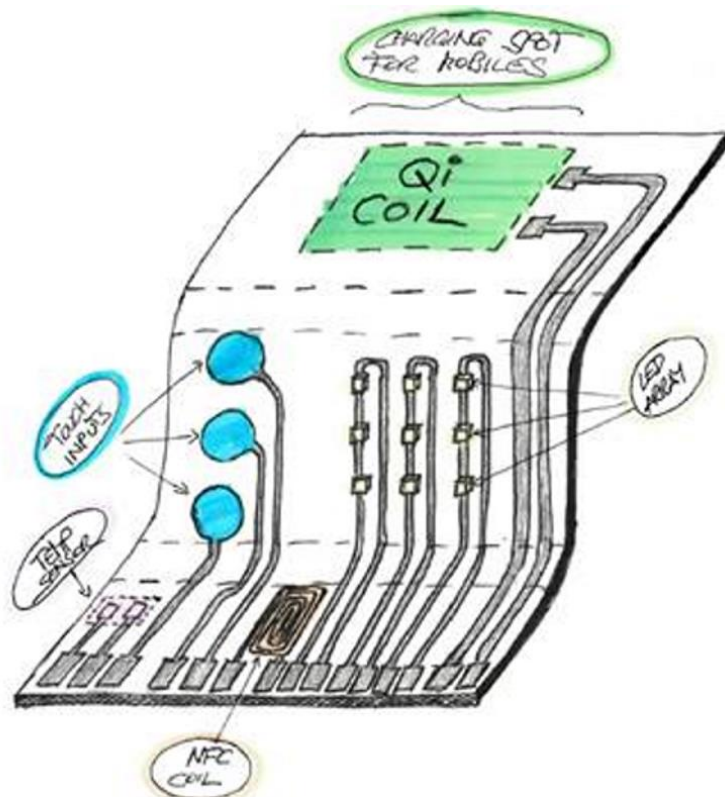
Horizon 2020 BEWELL: Evolution of design & prototypes



<https://h2020bewell.eu>

Printed Electronics

Horizon 2020 LEE-BED: Prototyping with DTI & RISE Pilot lines (Inkjet & S2S)



<https://lee-bed.eu>

Open Innovation Test Bed for Lightweight Embedded Electronics

Questions & contact



Rafael Michalczuk

rafael.michalczuk@swarovski.com

