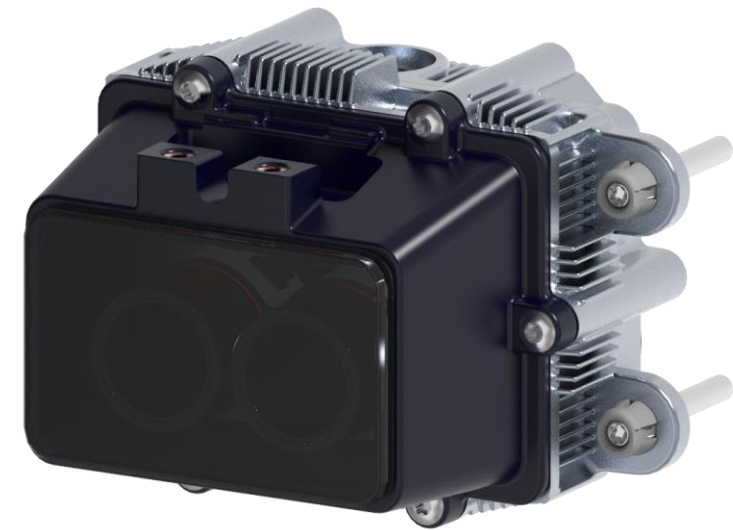
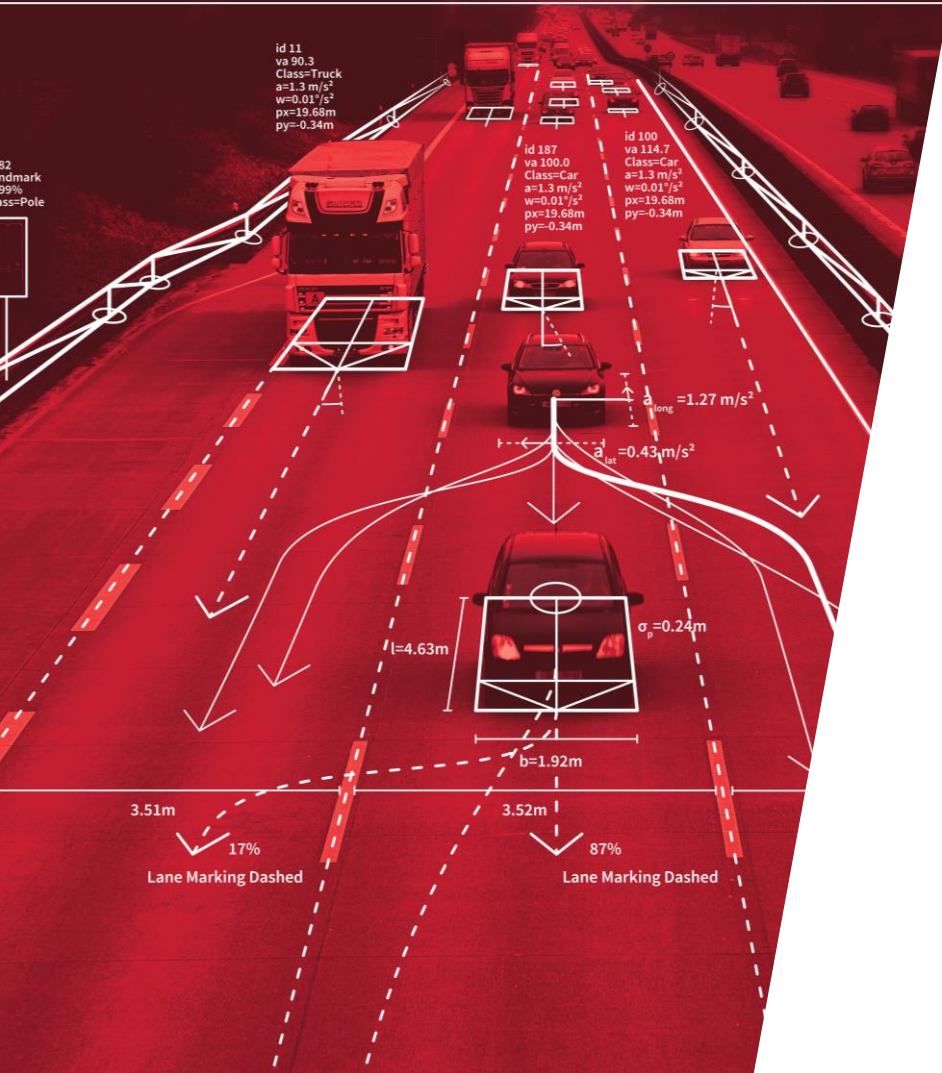


AUTOMOTIVE LIDAR IN SERIES PRODUCTION

EPIC Online Technology Meeting on 3D Sensing
2020-11-23 | Hanno Holzhüter



Document class: Public



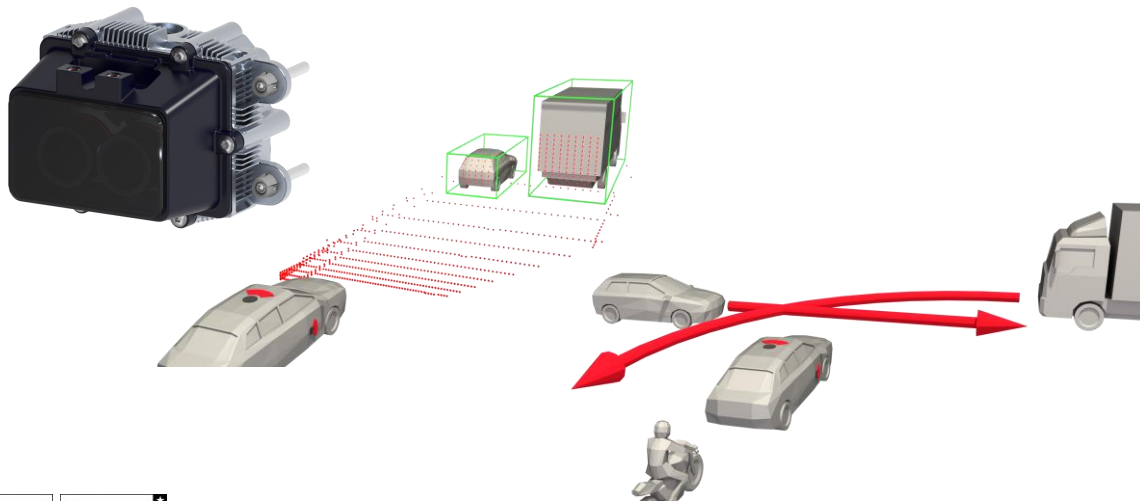
Ibeo Automotive Systems

420+ employees

Specialized in the field of automotive LiDAR Sensors
(whole LiDAR chain)

Offices

- Hamburg, Germany (Headquarters)
- Eindhoven NL, Detroit USA, China (coming soon)



Partnership with



SERIES SUPPLIER IN CHINA WITH GWM



Press release 30th July 2020

Largest LiDAR series contract



Sensor available now

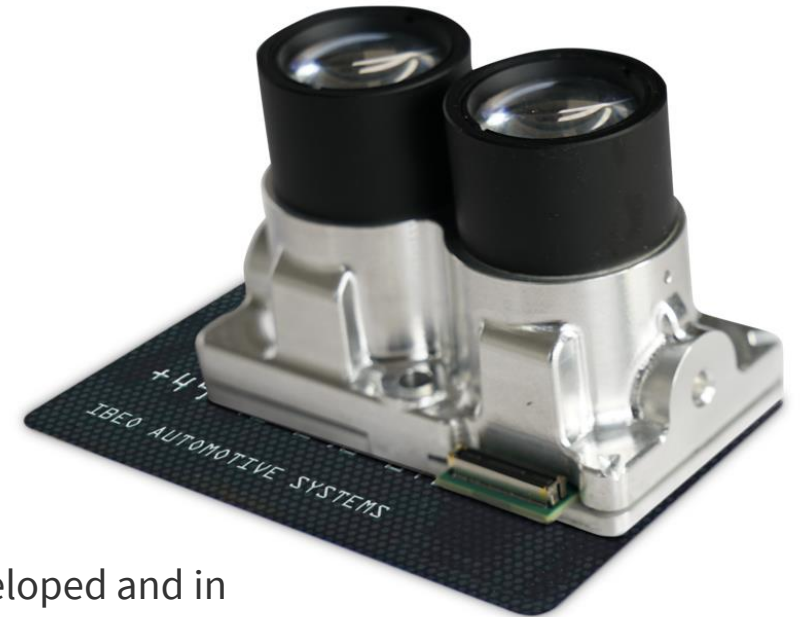
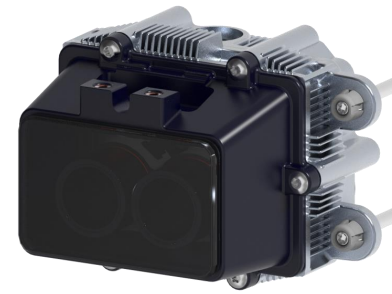


IBEO NEXT



Different Optical Modules (first generation)

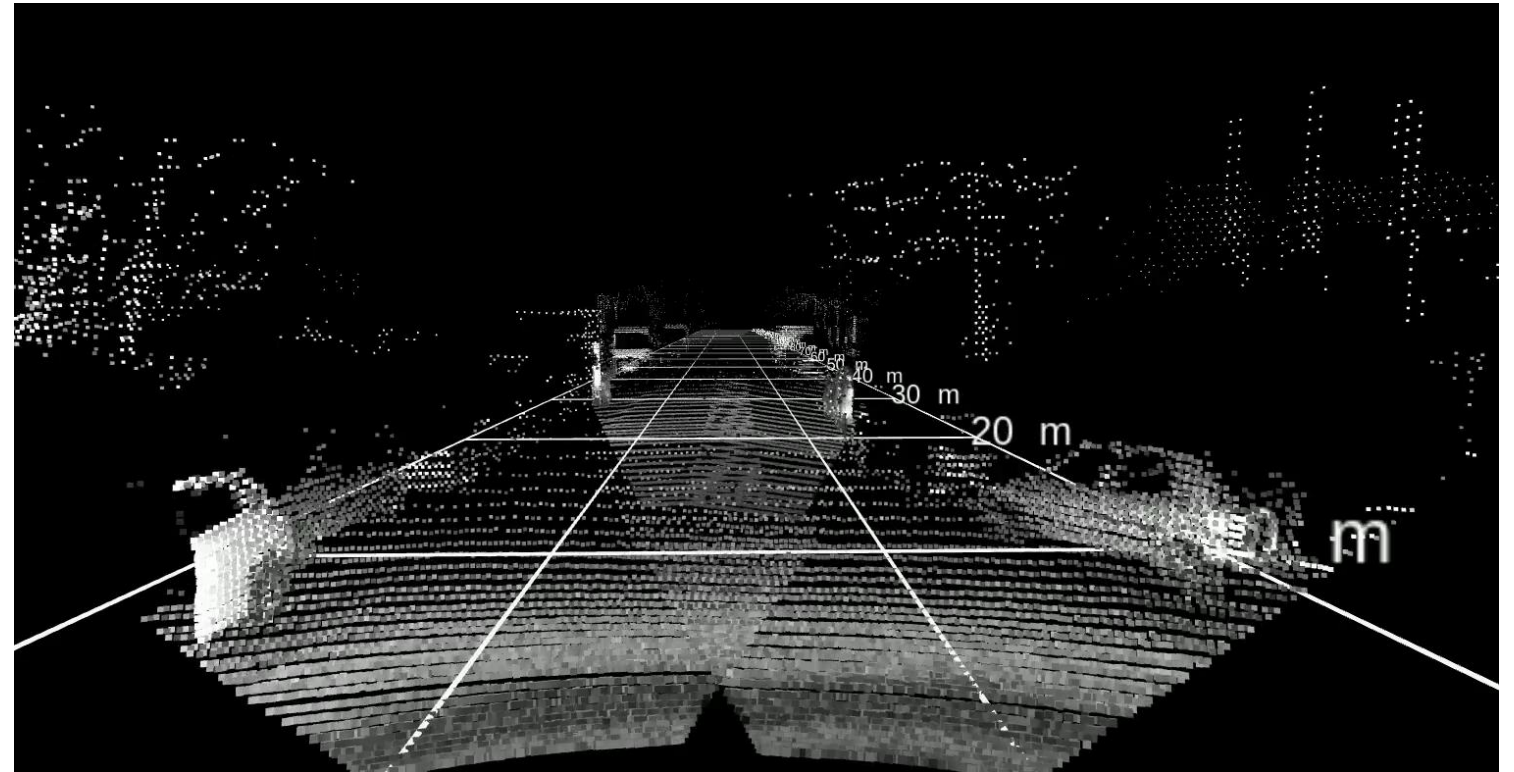
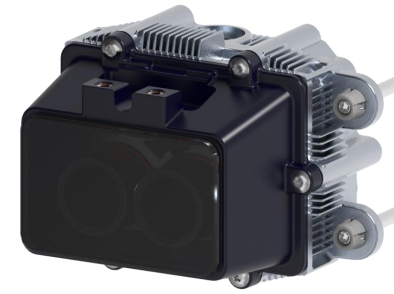
- Range:
> 250 m (150 m range|10%)
- Resolution:
0.05 deg ... 1.00 deg
- Field of View:
11 deg ... 120 deg

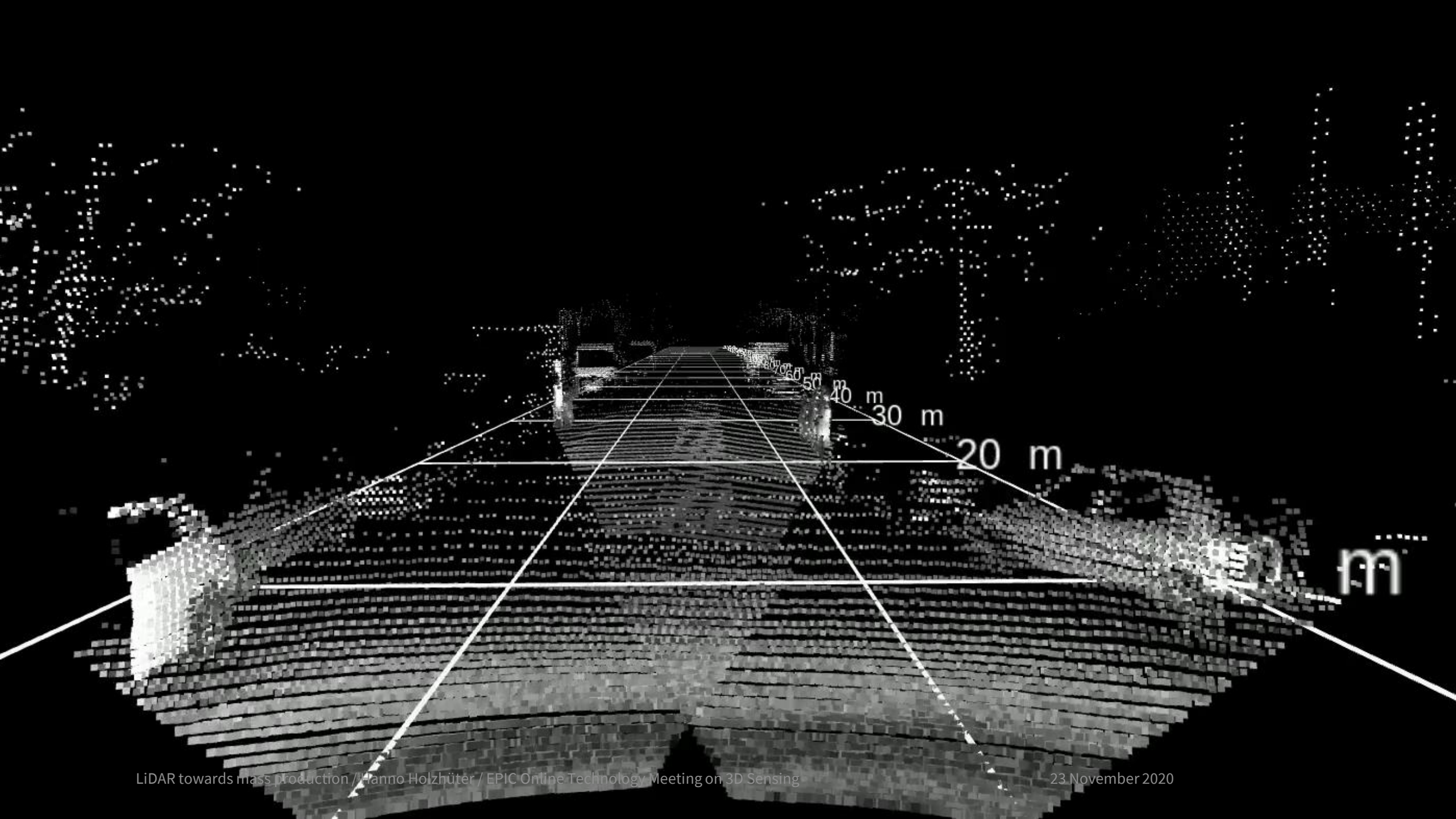


3 ASICS developed and in operation since March 2019

- VCSEL 10.240 emitter
- DRIVER 25 Hz (full Image)
- SPAD 10.240 pixel

IBEO NEXT

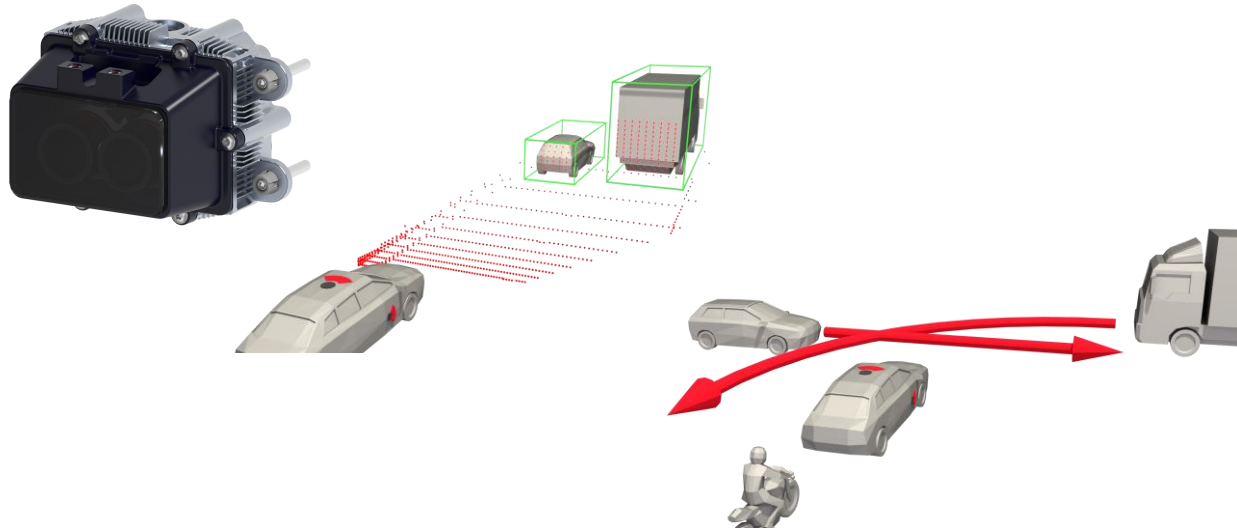




SUMMARY



Ibeo



LiDAR series contract



Enhanced point cloud



Hanno Holzhüter
Sensor Development

Ibeo Automotive Systems GmbH
Merkurring 60-62
22143 Hamburg
Germany

Email: hanno.holzhueter@ibeo-as.com

Web: www.ibeo-as.com



