

IBEO NEXT SOLID-STATE LIDAR

EPIC Online Technology Meeting on ADAS and Autonomous Driving
2020-07-15 | Hanno Holzhüter



Document class: Public

Specialized in the field of automotive LiDAR Sensors



Employees

- 420+

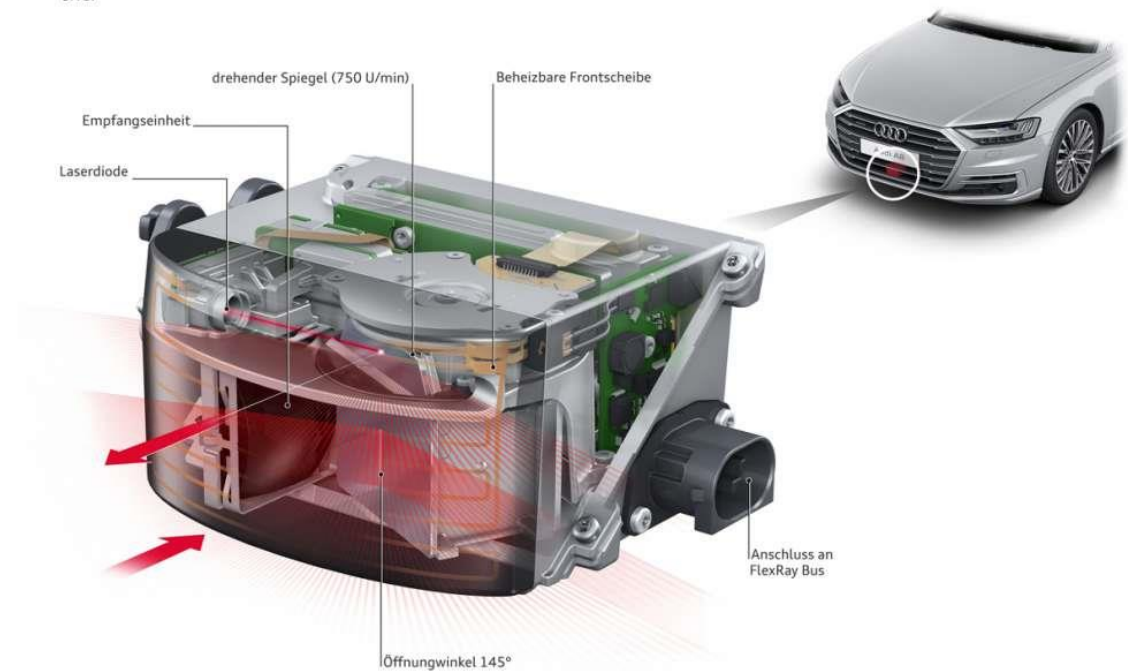
Offices

- Hamburg, Germany (Headquarters)
- Eindhoven NL, Detroit USA, China (coming soon)

Partnership with



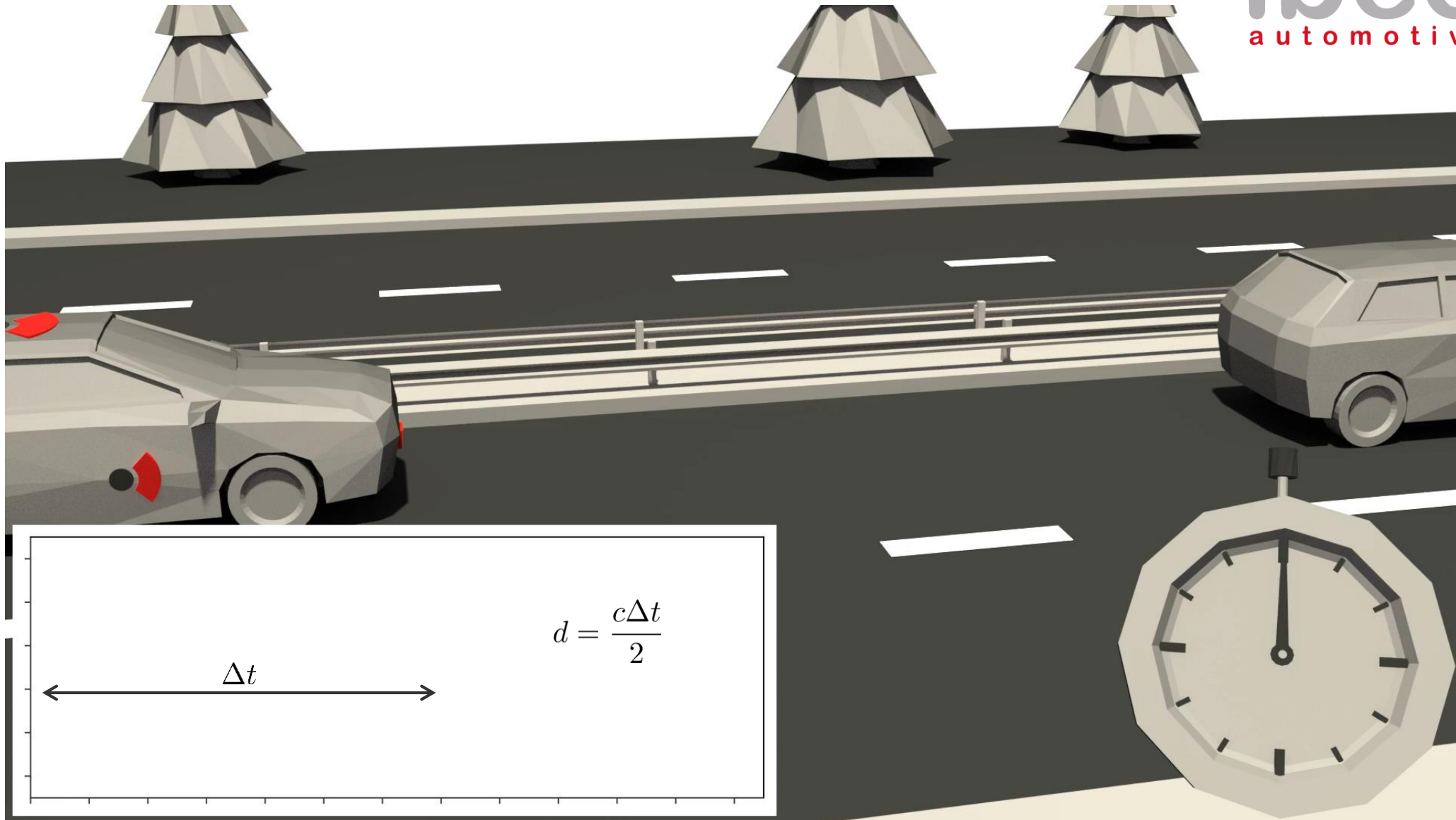
Audi A8
Laserscanner
Laser scanner
07/17



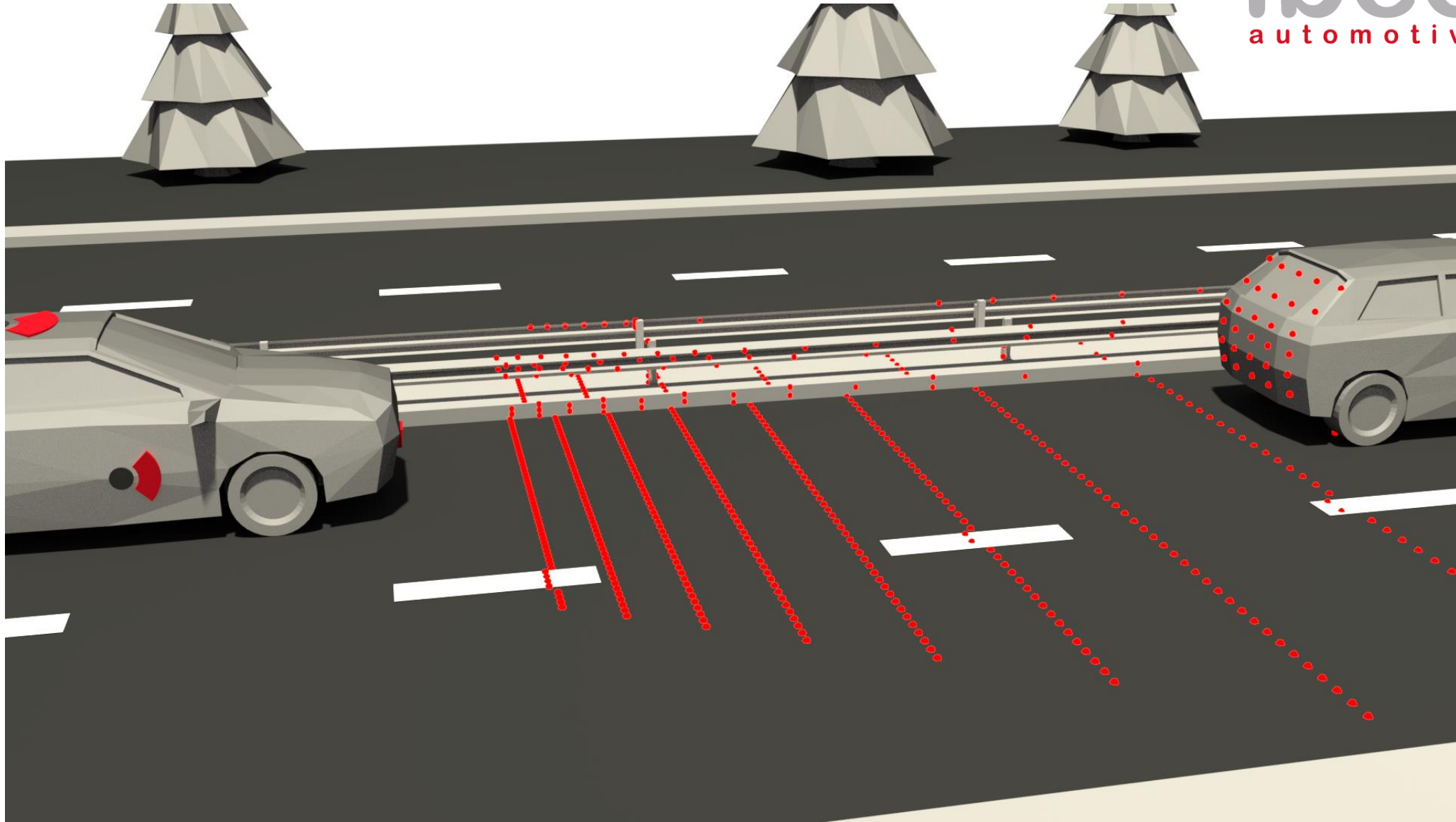
Together with Valeo in automotive serial production



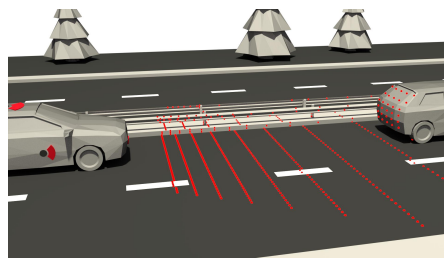
MEASURING DISTANCE WITH LIGHT



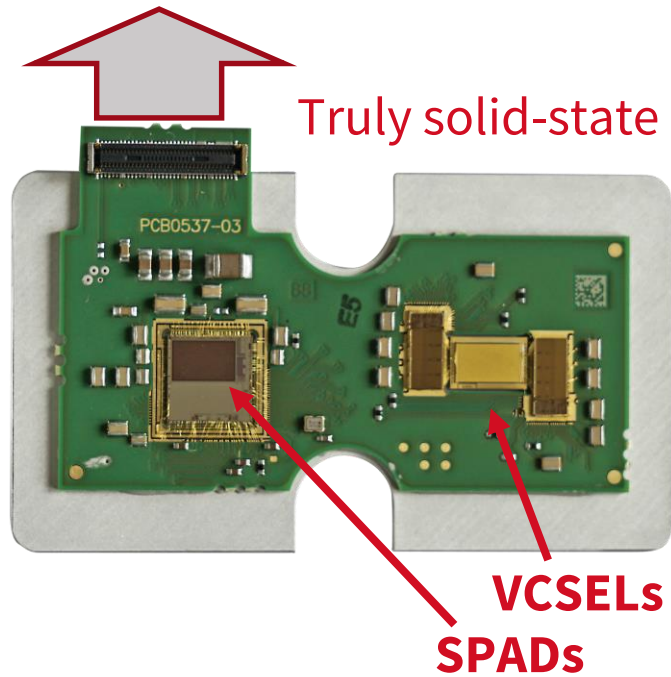
MEASURING DISTANCE WITH LIGHT



IBEO NEXT



3D Point Cloud Output
and Intensity Image Output



3 ASICS developed and in operation since March 2019

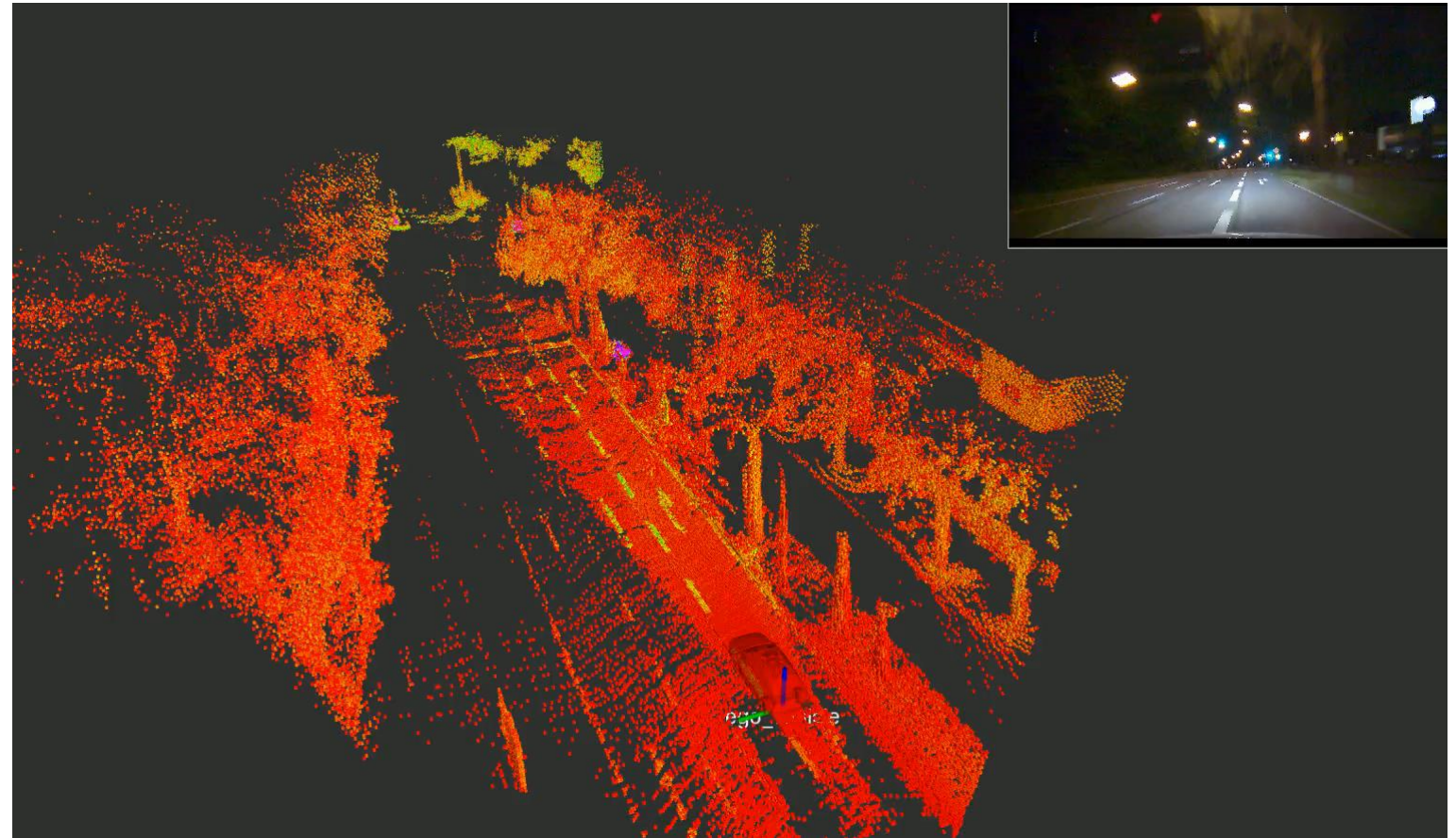
- VCSEL 12.800 emitter
- DRIVER 25 Hz (full Image)
- RECEIVER 12.800 pixels

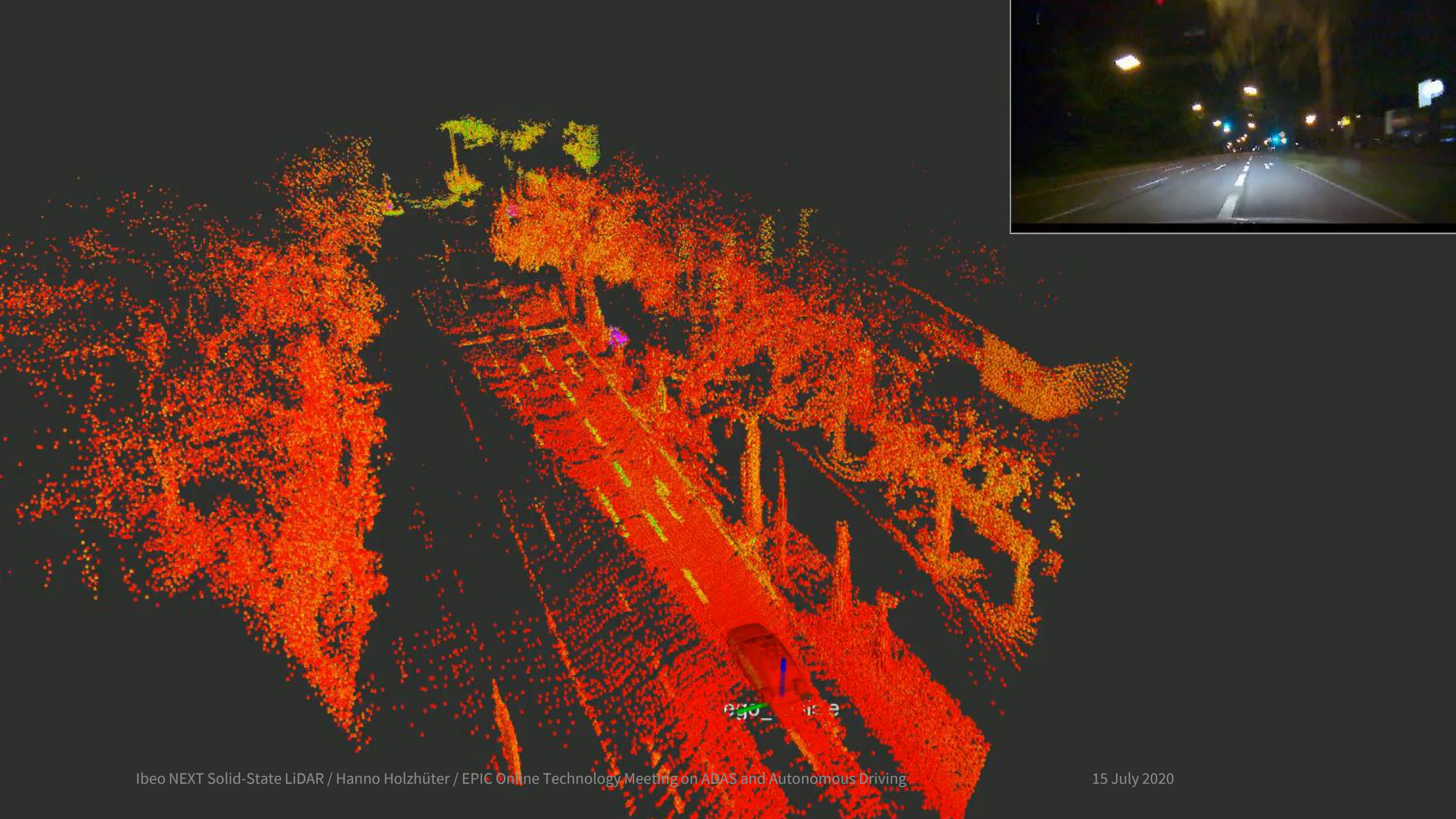
Different Optical Modules (first generation)

- Range:
> 250 m (150 m range|10%)
- Resolution:
0.05 deg ... 1.00 deg
- Field of View:
11 deg ... 120 deg



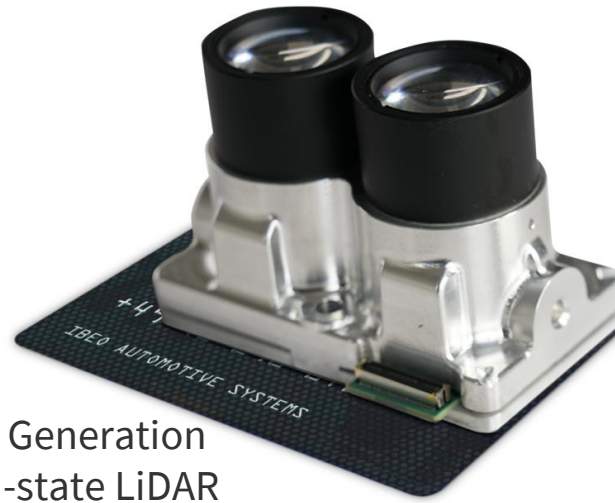
WHAT ONE CAN DO WITH IT



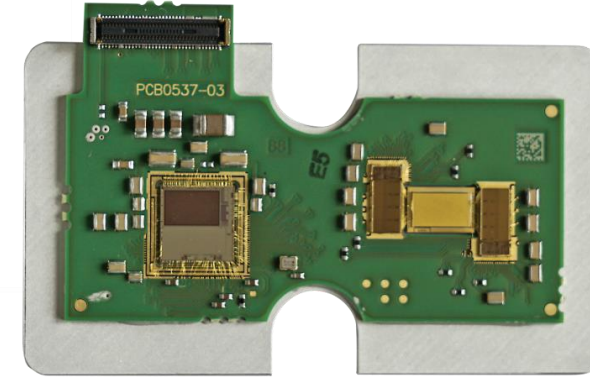


SUMMARY

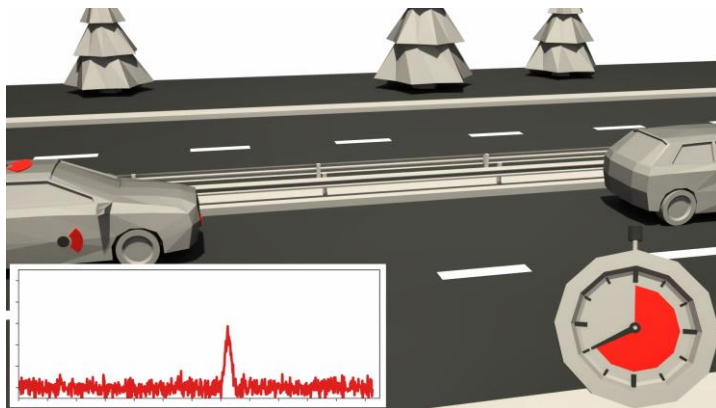
Ibeo



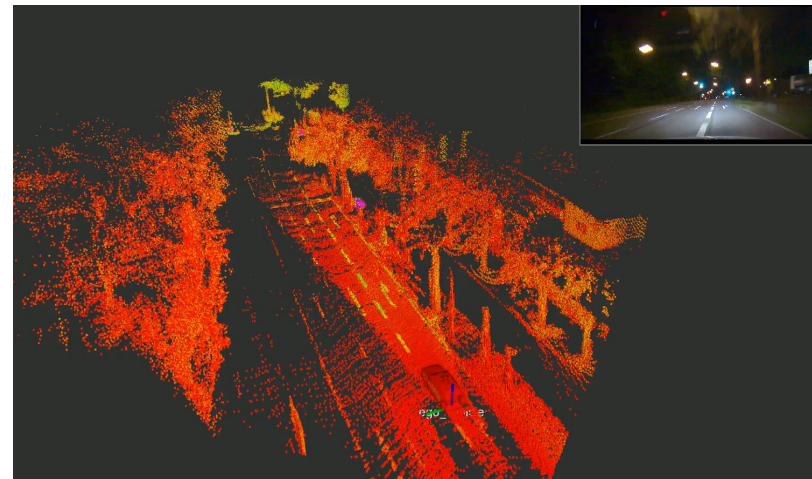
Next Generation
solid-state LiDAR



ToF LiDAR



Pointcloud for autonomous driving



Hanno Holzhüter
Sensor Development

Ibeo Automotive Systems GmbH
Merkurring 60-62
22143 Hamburg
Germany

Email: hanno.holzhueter@ibeo-as.com

Web: www.ibeo-as.com



