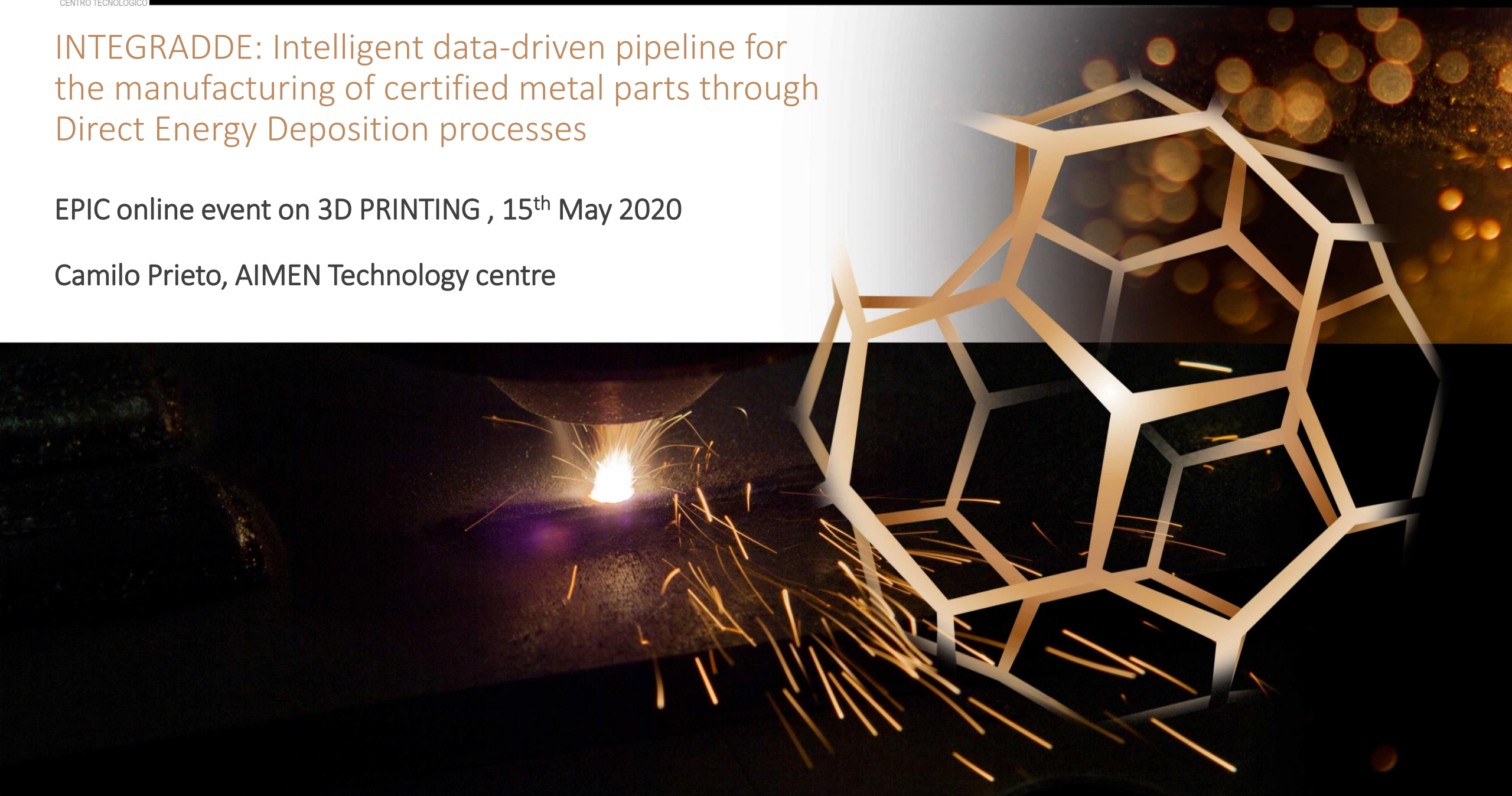


INTEGRADDE: Intelligent data-driven pipeline for the manufacturing of certified metal parts through Direct Energy Deposition processes

EPIC online event on 3D PRINTING , 15th May 2020

Camilo Prieto, AIMEN Technology centre





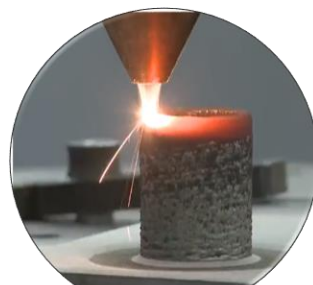
Industry supported, private centre. Applied R&D in



Advanced Materials



Smart Systems and Smart Manufacturing



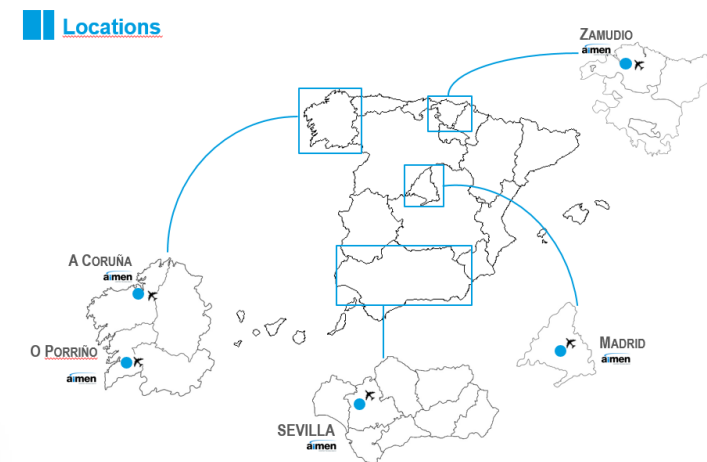
Advanced and Additive Manufacturing



Micro and High Precision Manufacturing



Sustainable Manufacturing Processes



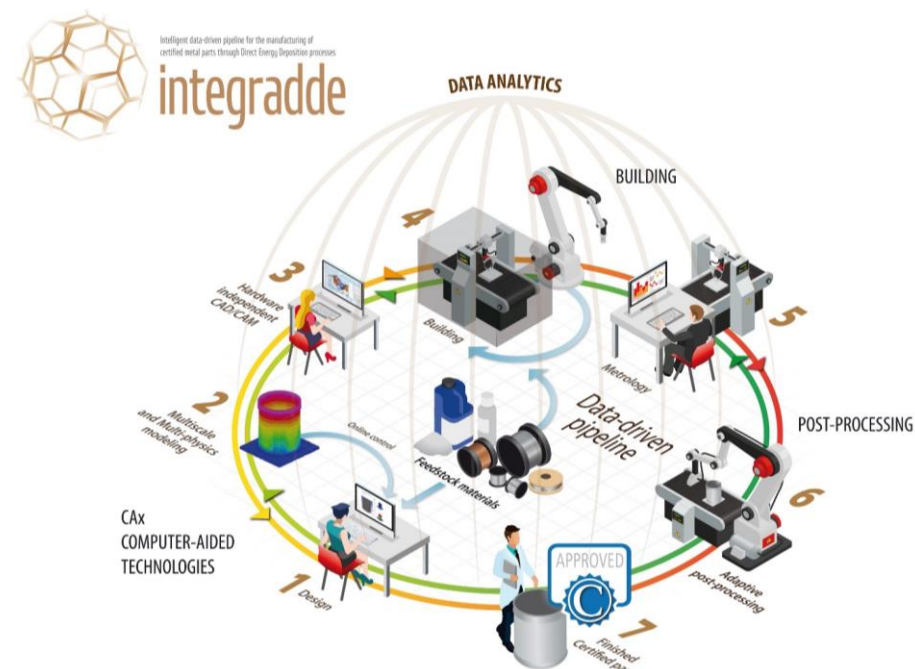
Topic: DT-FOF-04-2018. Pilot lines for metal Additive Manufacturing (IA)

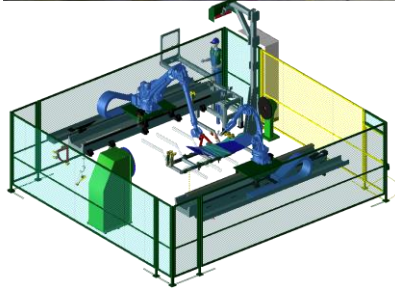
Manufacturability, reliability and quality of a target metal component by DED technologies: LMD, WAAM

- Suitable to large parts
- Design freedom: over non-flat parts, no support structures
- Combinations of materials possible
- Near-net shape -> machining as post-AM-process
- **Reconstruction and Repairing:** Identical properties as base material or enhanced properties adapted to functionality
- **New components**

Additive manufacturing of industrial components by laser direct energy deposition

Digital end-to-end manufacturing solution for a seamless integration across the entire AM chain





WAAM

Tooling – aeronautics
Moulding tooling for
aeronautic
INVAR

MX3D



WAAM

Construction
3D printed steel
structural
components.
Steel



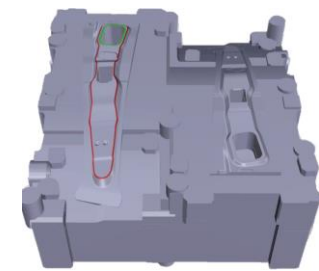
LMD-w

Aeronautics
Engine case
Titanium



LMD-p

Steel industry
Large parts for
the steelmaking
Metal-alloy

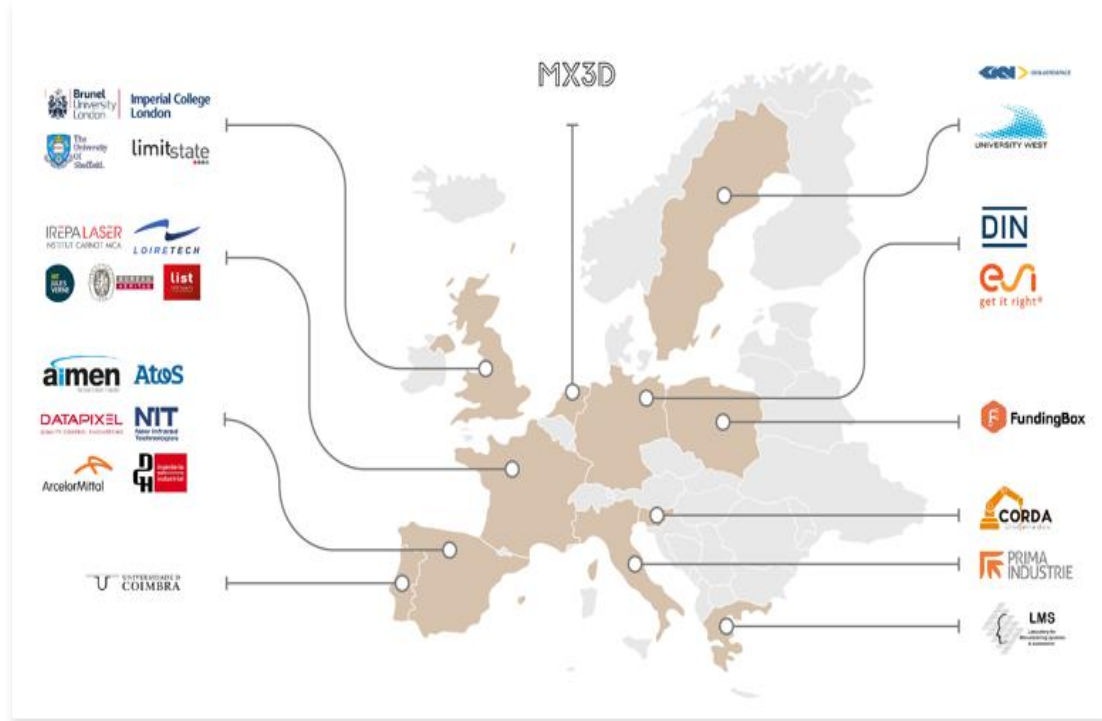


LMD-p

Tooling -
automotive
Cutting and
stamping tools
Tool-steel

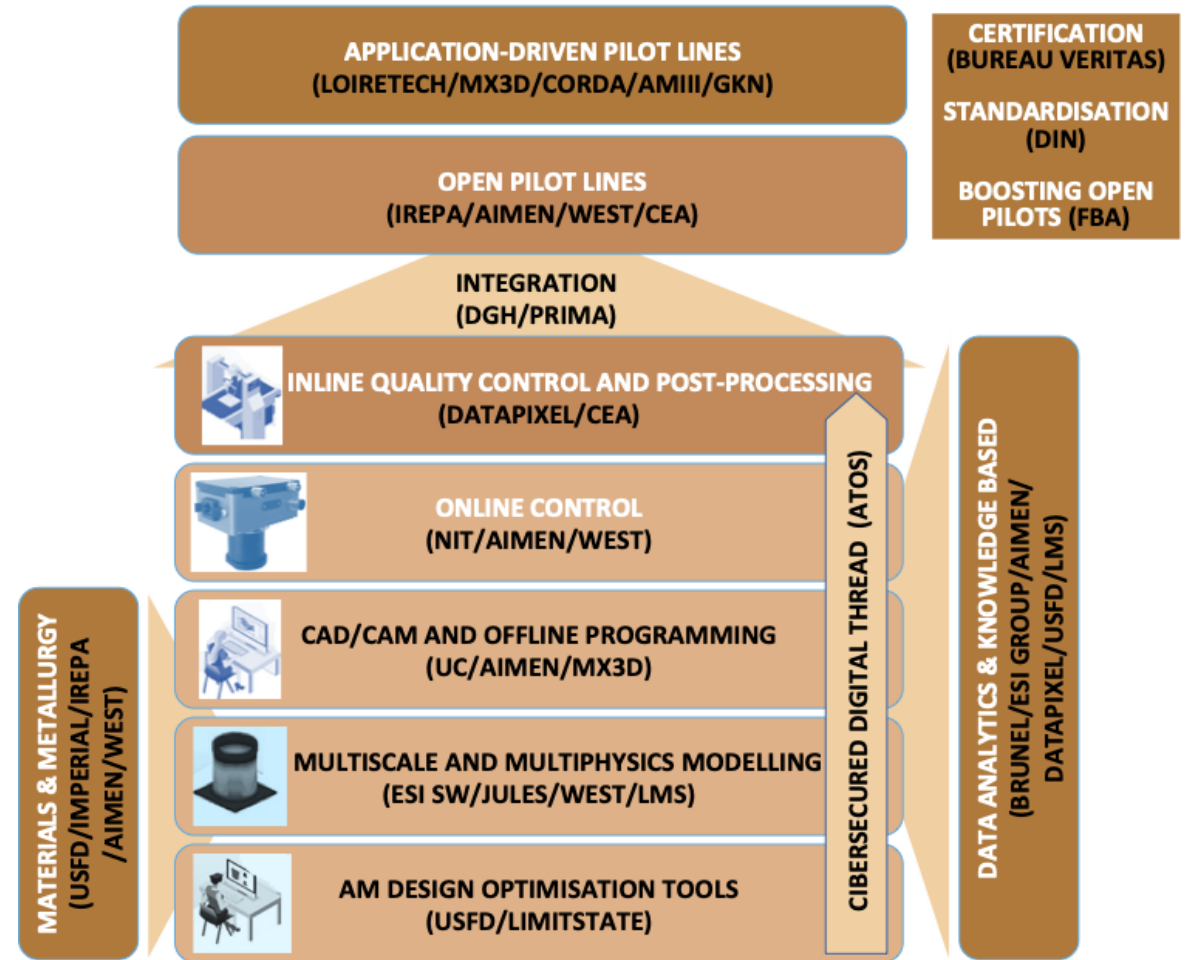


integradde



www.integradeproject.eu

OPEN PILOT LINES NETWORK: Offering services to EU industry of consultancy and proof-of-concept of DED technologies for manufacturing



PRODUCT ENGINEERING

Part design &
Topology
optimisation
(CAD)

Path planning
& process
simulation
(CAPP/CAE)

Automatic
Off line
programming
(CAM)

BUILD & CONTROL

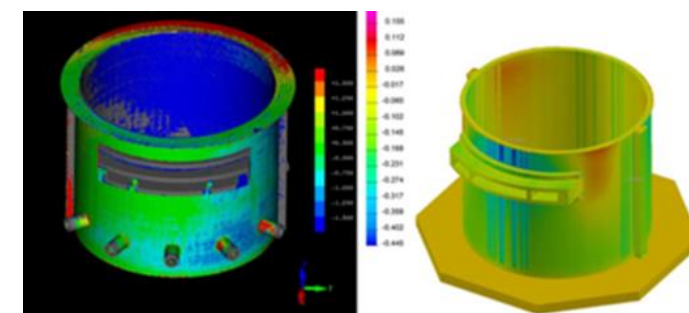
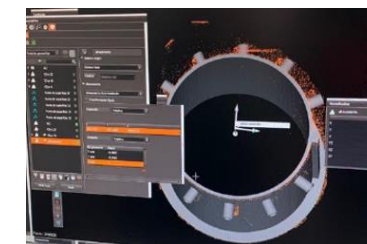
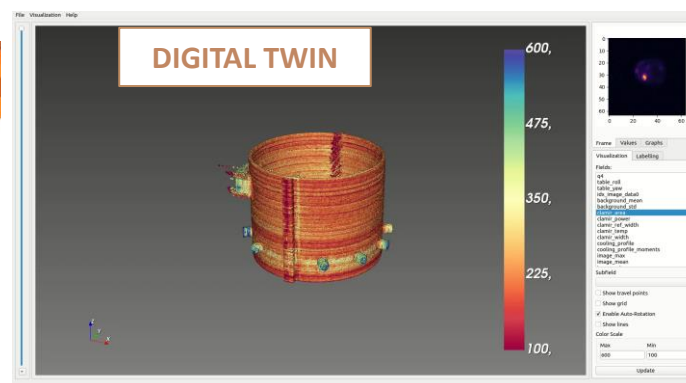
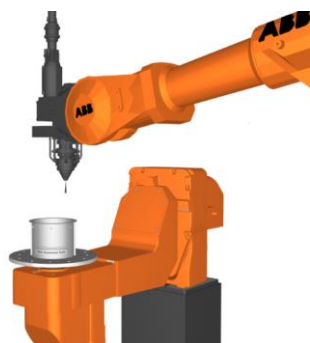
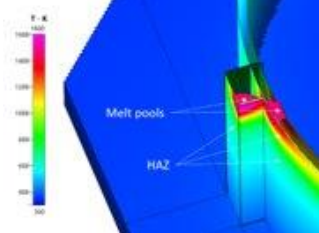
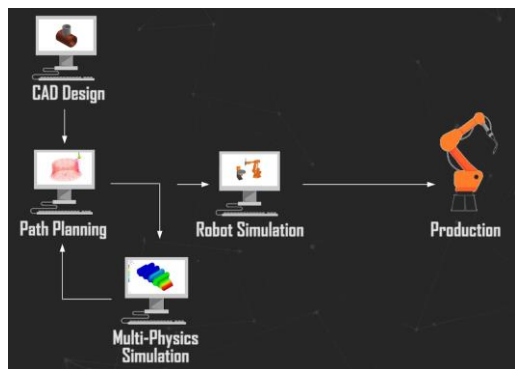
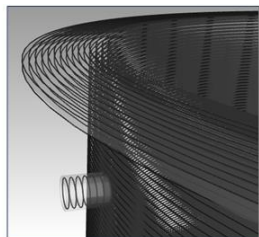
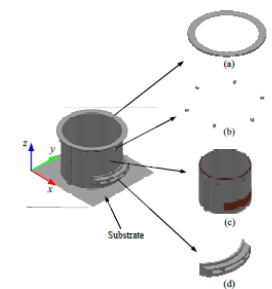
Additive
Manufacturing

Process monitoring
and control

Data analytics

QC AND POSTPROCESS

Metrology and NDT





Intelligent data-driven pipeline for the manufacturing of
certified metal parts through Direct Energy Deposition processes

integraddde

Camilo Prieto, Advanced Manufacturing Processes
AIMEN Technology Center

camilo.prieto@aimen.es

Thank you for your attention



This project has received funding from the European Union's Horizon 2020 research and innovation programme under grant agreement No 820776