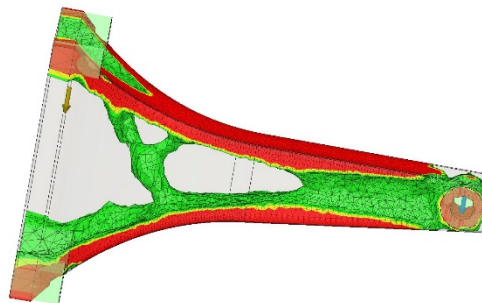
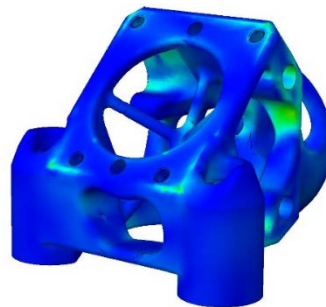


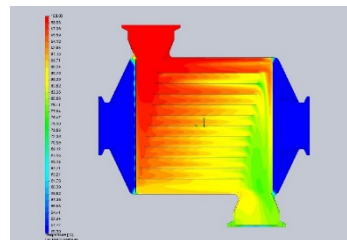
TOPOLOGY
OPTIMIZATION



FEA



CFD



DESIGN



APPLICATION SECTOR

3 OF THESE FEATURES

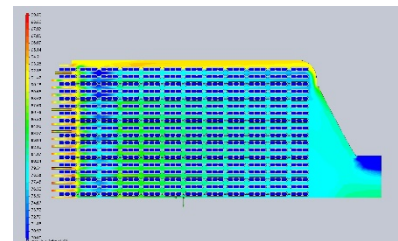
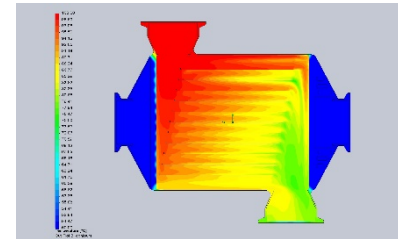
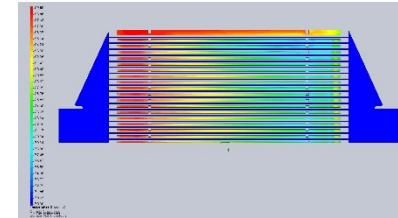
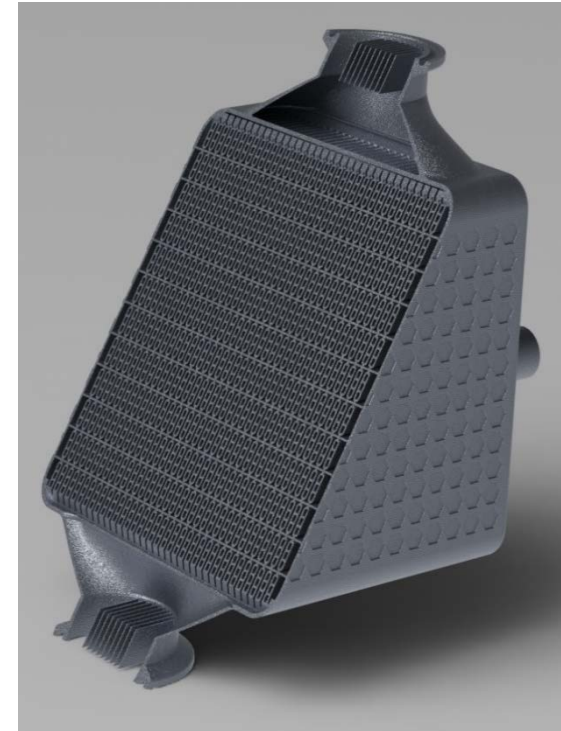
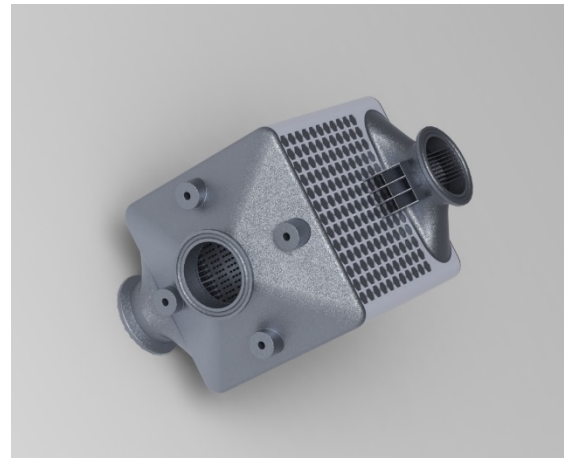
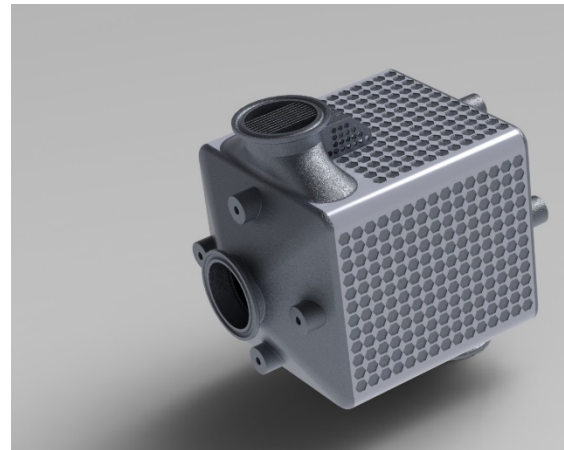
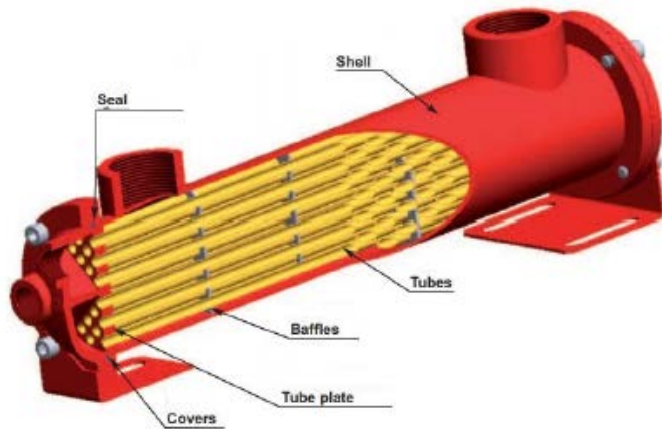
- Rapid prototyping
- Small batch production
- Spare Parts
- Top of the performance
- Lightweight
- Exclusive design



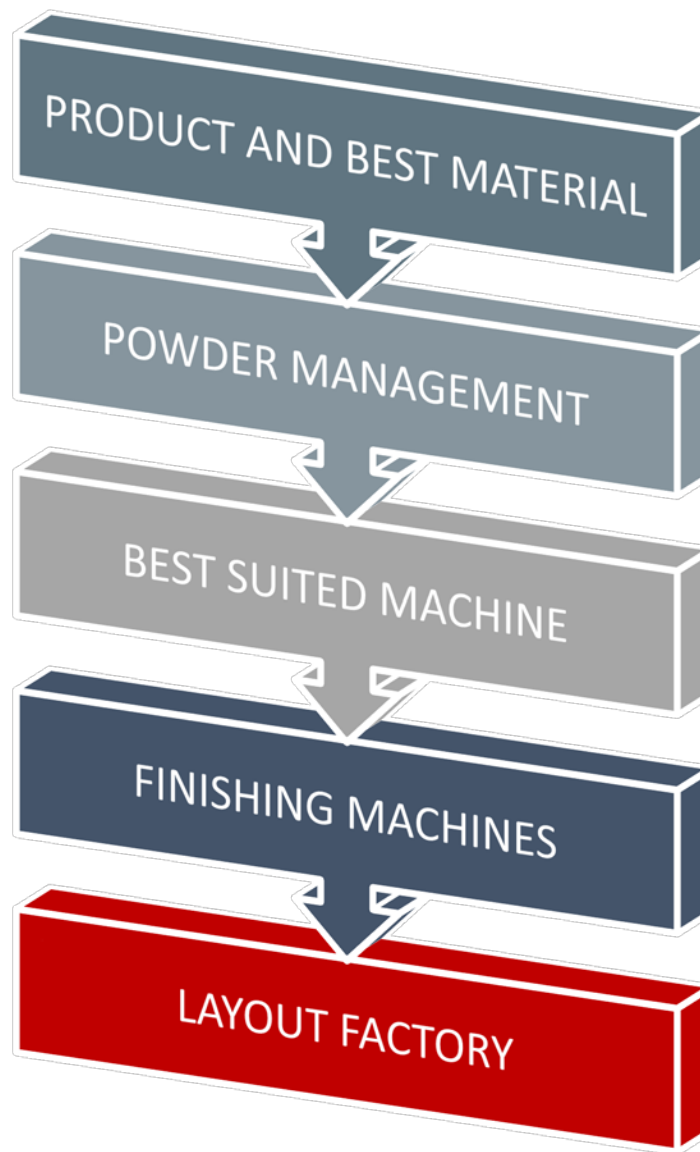
CASE STUDY

ADDITIVE OIL-WATER
HEAT EXCHANGER
Overall dimensions: mm.
219.5 x150x 230
50L/min
Power: about 50 KW

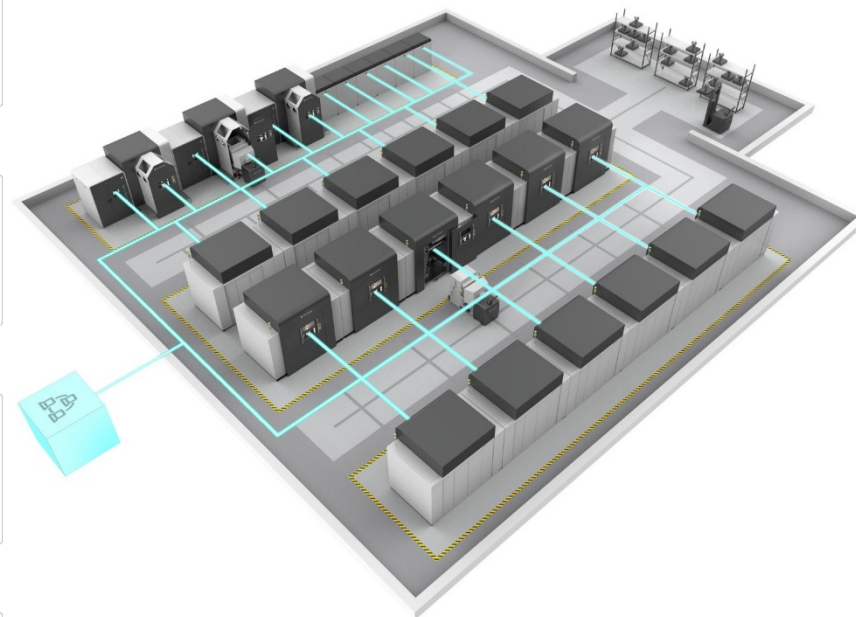
TRADITIONAL OIL-WATER
HEAT EXCHANGER
Overall dimensions: mm.
135.5 x 115 x478
50L /min
Power: 7-8 KW



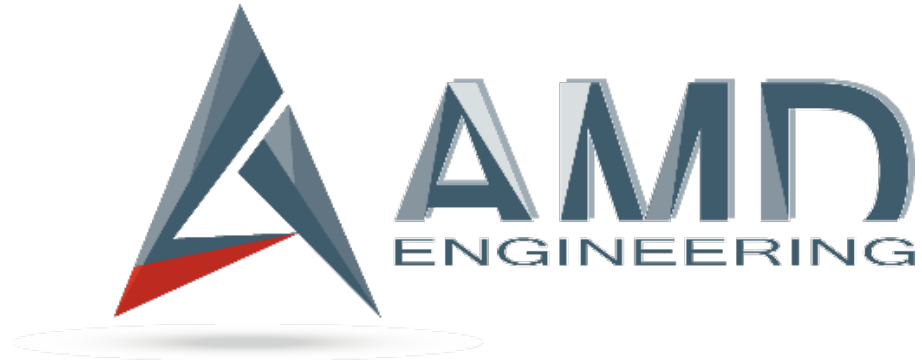
CONSULTING FOR ADDITIVE MANUFACTURING FACTORY



FACTORY OF THE FUTURE



THANKS FOR YOUR ATTENTION



AMD Engineering S.r.l.
Via Cipro,1
25124 Brescia (BS)
Italy

Phone:+39 030 22193420

info@amdengineering.net

www.amdengineering.net